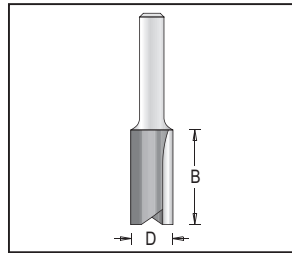
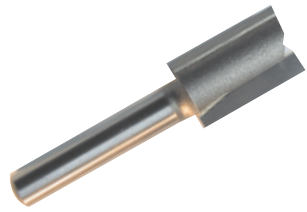


Straight Bits 1/4" Shank, Metric, 2 Flutes



Radial Relief



Solid Carbide Cutting Edges



Available in RCB



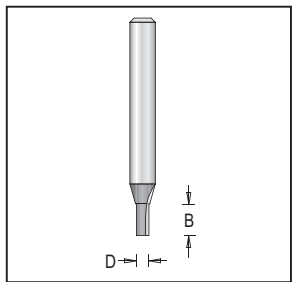
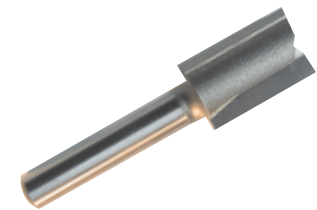
Plunge



Tool no.	D	Shank	B	Length	Category
* 107R4-3M	3mm	1/4"	5/16"	1 9/16"	R
* 107R4-4M	4mm	1/4"	7/16"	2"	R
* 107R4-5M	5mm	1/4"	7/16"	2"	R
* 107R4-6M	6mm	1/4"	3/4"	2"	R
107R4-7M	7mm	1/4"	3/4"	2"	R
107R4-8M	8mm	1/4"	3/4"	2"	R
107RL4-8M	8mm	1/4"	1"	2 1/4"	R
107R4-9M	9mm	1/4"	3/4"	2"	R
107R4-10M	10mm	1/4"	3/4"	2"	R
107R4-11M	11mm	1/4"	3/4"	2"	R
107R4-12M	12mm	1/4"	3/4"	2"	R
107R4-13M	13mm	1/4"	3/4"	2"	R
107R4-14M	14mm	1/4"	3/4"	2"	R
107R4-15M	15mm	1/4"	3/4"	2"	R
107R4-16M	16mm	1/4"	3/4"	2"	R
107RL4-16M	16mm	1/4"	1 1/4"	2 1/2"	R
107R4-17M	17mm	1/4"	3/4"	2"	R
107R4-18M	18mm	1/4"	3/4"	2"	R
107R4-19M	19mm	1/4"	3/4"	2"	R
107R4-20M	20mm	1/4"	3/4"	2"	R
107R4-21M	21mm	1/4"	3/4"	2"	R
107R4-22M	22mm	1/4"	3/4"	2"	R
107R4-25M	25mm	1/4"	3/4"	2"	R

* Solid carbide cutting edges

Straight Bits 1/4" Shank, 2 Flutes



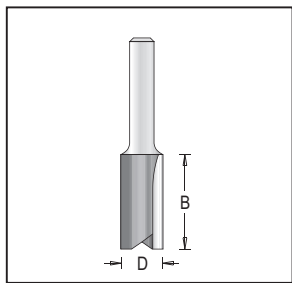
Radial Relief



Solid Carbide Cutting Edges



Plunge



Tool no.	D	Shank	B	Length	Category
* 107R4-1.5	1/16"	1/4"	3/16"	1 7/8"	R
* 107R4-2.4	3/32"	1/4"	1/4"	1 7/8"	R
* 107R4-3	1/8"	1/4"	7/16"	2"	R
* 107RL4-3	1/8"	1/4"	5/16"	2 3/16"	R
107R4-4	5/32"	1/4"	7/16"	2"	R
107R4-5	3/16"	1/4"	7/16"	2"	R
107RL4-5	3/16"	1/4"	5/8"	2 1/8"	R
107R4-5.5	7/32"	1/4"	3/4"	1 7/8"	R
107R4-6A	1/4"	1/4"	1/2"	2"	R
107R4-6	1/4"	1/4"	3/4"	2"	R
107RL4-6	1/4"	1/4"	1"	2 1/4"	R
107R4-7	9/32"	1/4"	3/4"	2"	R
107RL4-7	9/32"	1/4"	1"	2 1/4"	R
107R4-8	5/16"	1/4"	3/4"	2"	R
107RL4-8	5/16"	1/4"	1"	2 1/4"	R
107R4-10	3/8"	1/4"	3/4"	2"	R
107RL4-10	3/8"	1/4"	1"	2 1/4"	R
107RLS4-10	3/8"	1/4"	1 1/4"	2 1/2"	R
107R4-11	7/16"	1/4"	3/4"	2"	R
107RL4-11	7/16"	1/4"	1"	2 1/8"	R
107R4-12	1/2"	1/4"	3/4"	2"	R
107RL4-12	1/2"	1/4"	1"	2 1/8"	R
107RLS4-12	1/2"	1/4"	1 1/4"	2 1/2"	R
107R4-16	5/8"	1/4"	3/4"	2"	R
107RL4-16	5/8"	1/4"	1"	2 1/4"	R
107R4-18	11/16"	1/4"	3/4"	2"	R
107RL4-18	11/16"	1/4"	1"	2 1/4"	R
107R4-19	3/4"	1/4"	3/4"	2"	R
107RL4-19	3/4"	1/4"	1"	2 1/4"	R
107R4-20	13/16"	1/4"	3/4"	2"	R
107R4-22	7/8"	1/4"	3/4"	2"	R
107R4-24	15/16"	1/4"	3/4"	2"	R
107R4-25	1"	1/4"	3/4"	2"	R

* Solid carbide cutting edges