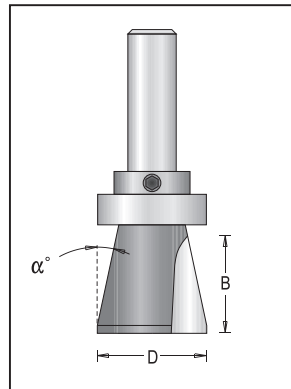


Topmounted Bowl  
& Countertop Bits, 2 Flutes

For Solid Surface

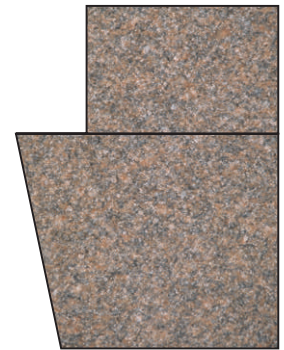


Tool no.	D	Shank	B	$\alpha$	Length	Category
104RCR8-28	1 1/8"	1/2"	1"	12°	3 1/8"	R

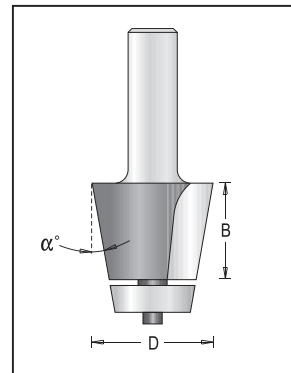
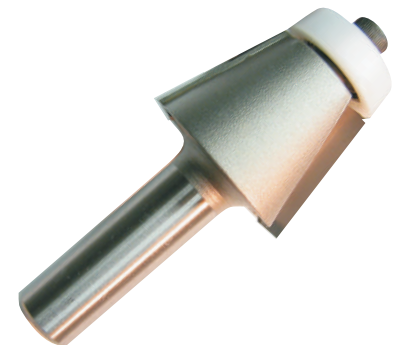


Topmounted Bow  
& Countertop Bits, 2 Flutes

For Solid Surface



Tool no.	D	Shank	B	$\alpha$	Length	Category
104RC8-28	1 1/8"	1/2"	1"	12°	3 1/8"	R



Bevel Undermount Bowl Bit,  
2 Flutes

For Solid Surface



Tool no.	D	Shank	B	$\alpha$	Length	Category
151R8-22	1 1/4"	1/2"	1"	12°	3 3/16"	R