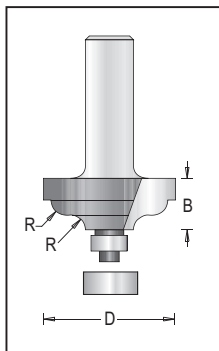
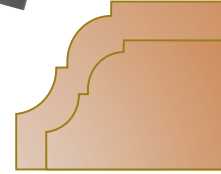
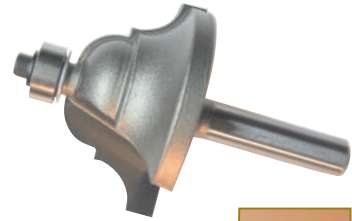


Roman Ogee Bits with Ball Bearing Guide, 2 Flutes



Parts page 114

Tool no.	D	Shank	B	R	Length	Parts
113RSP4-4	1"	1/4"	5/8"	5/32"	2 1/16"	C
113RSP8-4	1"	1/2"	5/8"	5/32"	2 7/16"	C
113RSP4-6	1 3/8"	1/4"	3/4"	1/4"	2 1/4"	C
113RSP8-6	1 3/8"	1/2"	3/4"	1/4"	2 5/8"	C



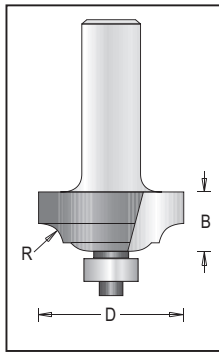
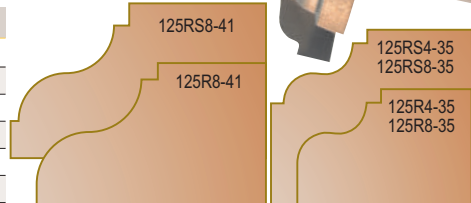
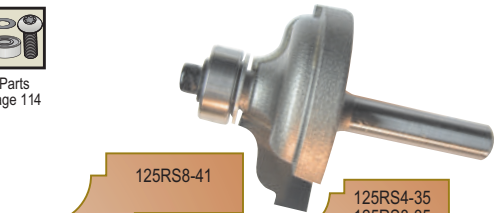
Ogee Fillet Bits with Ball Bearing Guide, 2 Flutes



Flat Screw

Parts page 114

Tool no.	D	Shank	B	R	Length	Parts
125R4-35	1 3/8"	1/4"	9/16"	5/32"	2 1/16"	D
125R8-35	1 3/8"	1/2"	9/16"	5/32"	2 1/2"	D
125R8-41	1 5/8"	1/2"	3/4"	1/4"	2 5/8"	D
125RS4-35	1 3/8"	1/4"	9/16"	5/32"	2 1/16"	B
125RS8-35	1 3/8"	1/2"	9/16"	5/32"	2 1/2"	B
125RS8-41	1 5/8"	1/2"	3/4"	1/4"	2 5/8"	B



Classical Bits With Ball Bearing Guide, 2 Flutes

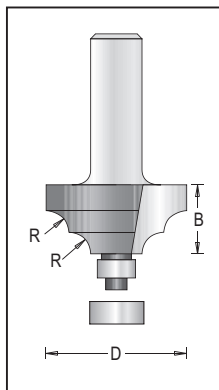


Category

Flat Screw

Parts page 114

Tool no.	D	Shank	B	R1	R2	Length	Parts
128R4-32	1 1/4"	1/4"	1/2"	3/16"	1/16"	2 1/16"	D
128R8-32	1 1/4"	1/2"	1/2"	3/16"	1/16"	2 3/8"	D
128R4-38	1 1/2"	1/4"	5/8"	15/64"	9/64"	2 3/32"	D
128R8-38	1 1/2"	1/2"	5/8"	15/64"	9/64"	2 1/2"	D



Classical Bits with Ball Bearing Guide, 2 Flutes

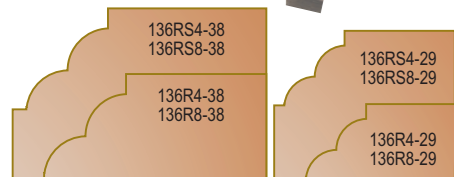
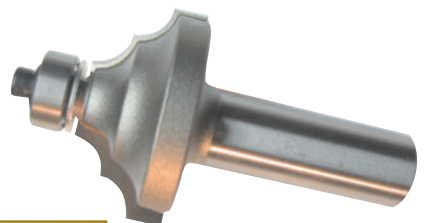


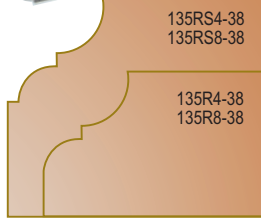
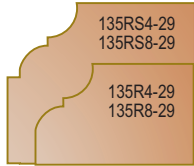
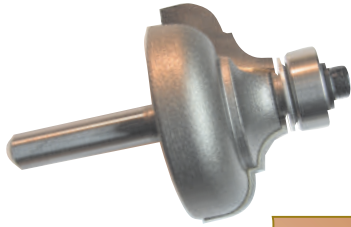
Category

Flat Screw

Parts page 114

Tool no.	D	Shank	B	R	Length	Parts
136R4-29	1 1/8"	1/4"	1/2"	5/32"	2"	D
136R8-29	1 1/8"	1/2"	1/2"	5/32"	2 3/8"	D
136R4-38	1 3/8"	1/4"	11/16"	7/32"	2 3/16"	D
136R8-38	1 3/8"	1/2"	11/16"	7/32"	2 9/16"	D
136RS4-29	1 1/8"	1/4"	1/2"	5/32"	2"	B
136RS8-29	1 1/8"	1/2"	1/2"	5/32"	2 3/8"	B
136RS4-38	1 3/8"	1/4"	11/16"	7/32"	2 3/16"	B
136RS8-38	1 3/8"	1/2"	11/16"	7/32"	2 9/16"	B





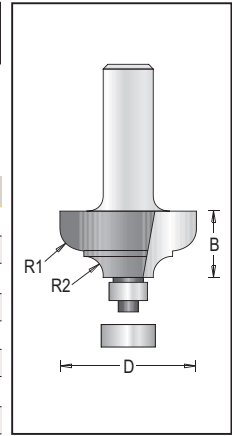
Ogee Fillet Bits with Ball Bearing Guide, 2 Flutes



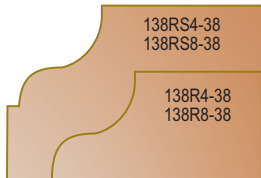
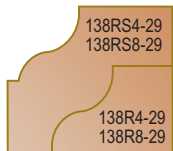
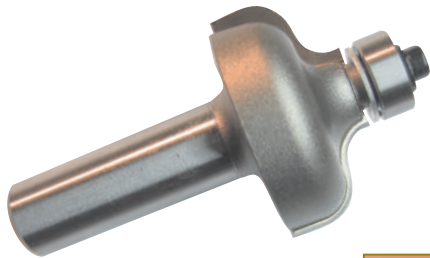
Flat Screw

Parts page 114

Tool no.	D	Shank	B	R1	R2	Length	Parts
135R4-29	1 1/8"	1/4"	1/2"	5/32"	5/32"	2 1/16"	D
135R8-29	1 1/8"	1/2"	1/2"	5/32"	5/32"	2 3/8"	D
135R4-38	1 3/8"	1/4"	11/16"	1/4"	3/16"	2 3/16"	D
135R8-38	1 3/8"	1/2"	11/16"	1/4"	3/16"	2 9/16"	D
135RS4-29	1 1/8"	1/4"	1/2"	5/32"	5/32"	2"	B
135RS8-29	1 1/8"	1/2"	1/2"	5/32"	5/32"	2 3/8"	B
135RS4-38	1 3/8"	1/4"	11/16"	1/4"	3/16"	2 3/16"	B
135RS8-38	1 3/8"	1/2"	11/16"	1/4"	3/16"	2 9/16"	B



ROUTING
CARBIDE TIPPED



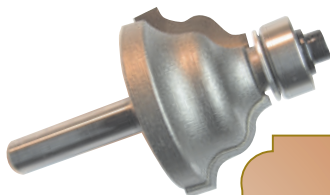
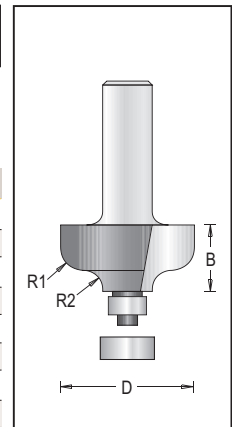
Panelling Bits with Ball Bearing Guide, 2 Flutes



Flat Screw

Parts page 114

Tool no.	D	Shank	B	R1	R2	Length	Parts
138R4-29	1 1/8"	1/4"	1/2"	5/32"	5/32"	2"	D
138R8-29	1 1/8"	1/2"	1/2"	5/32"	5/32"	2 3/8"	D
138R4-38	1 3/8"	1/4"	11/16"	1/4"	3/16"	2 3/16"	D
138R8-38	1 3/8"	1/2"	11/16"	1/4"	3/16"	2 9/16"	D
138RS4-29	1 1/8"	1/4"	1/2"	5/32"	5/32"	2"	B
138RS8-29	1 1/8"	1/2"	1/2"	5/32"	5/32"	2 3/8"	B
138RS4-38	1 3/8"	1/4"	11/16"	1/4"	3/16"	2 3/16"	B
138RS8-38	1 3/8"	1/2"	11/16"	1/4"	3/16"	2 9/16"	B



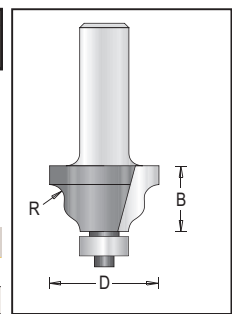
Wavy Edge Bits with Ball Bearing Guide, 2 Flutes

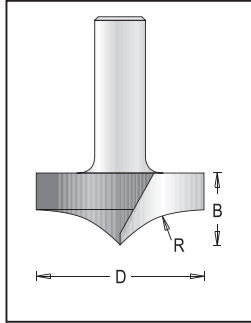


Flat Screw

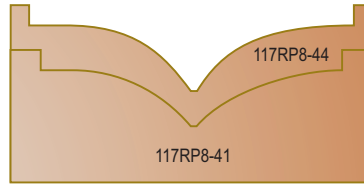
Parts page 114

Tool no.	D	Shank	B	R	Length	Parts
139R4-32	1 1/4"	1/4"	11/16"	5/32"	2 3/16"	D
139R8-32	1 1/4"	1/2"	11/16"	5/32"	2 9/16"	D

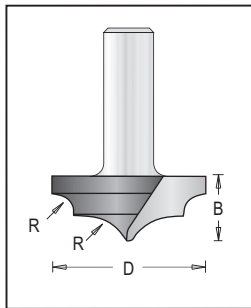
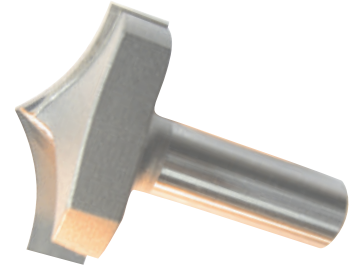




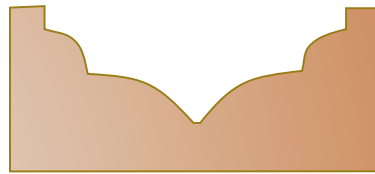
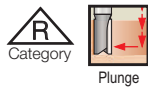
Rounding Over Plunge Type, 2 Flutes



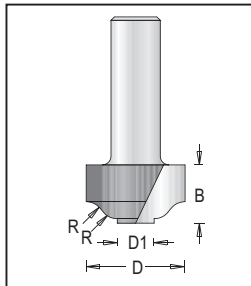
Tool no.	D	Shank	B	R	Length
117RP8-44	1 3/4"	1/2"	23/32"	23/32"	2 7/32"
117RP8-41	1 5/8"	1/2"	23/32"	1"	2 7/32"



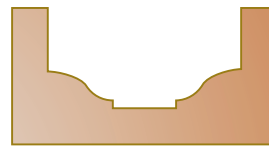
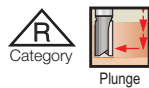
Rounding Over Plunge Type, 2 Flutes



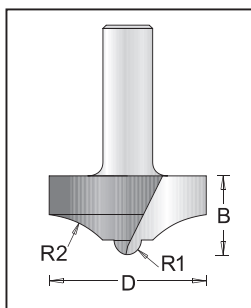
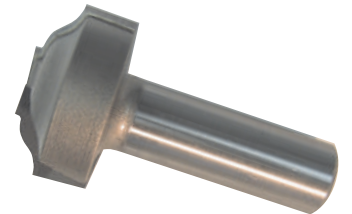
Tool no.	D	Shank	B	R	R1	Length
117RPD8-41	1 5/8"	1/2"	23/32"	1/4"	19/32"	2 7/32"



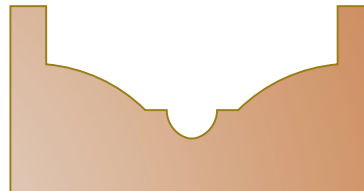
Step Flat Ogee Plunge Type, 2 Flutes



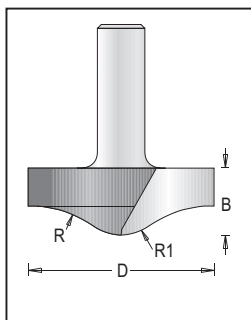
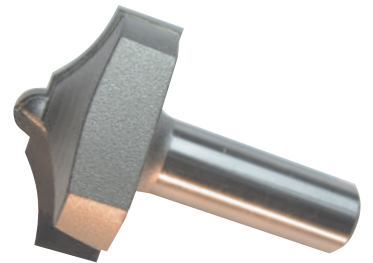
Tool no.	D	D1	Shank	B	R	Length
124RB8-25	1"	3/8"	1/2"	19/32"	3/16"	2 3/32"
124RB8-30	1 3/16"	15/32"	1/2"	19/32"	15/64"	2 3/32"



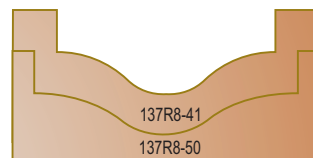
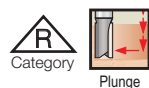
Round and Ogee Plunge Type, 2 Flutes



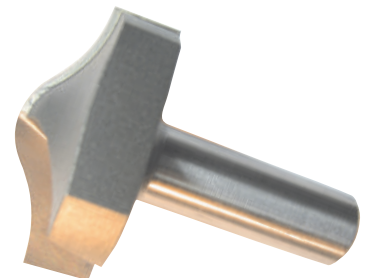
Tool no.	D	Shank	B	R1	R2	Length
137R8-40	1 9/16"	1/2"	25/32"	5/32"	7/8"	2 9/32"



Round and Ogee Plunge Type, 2 Flutes

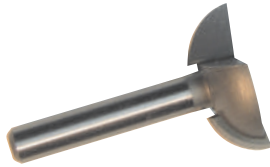
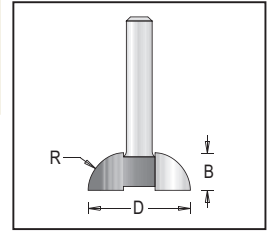


Tool no.	D	Shank	B	R1	R2	Length
137R8-41	1 5/8"	1/2"	23/32"	3/8"	3/4"	2 13/64"
137R8-50	1 31/32"	1/2"	23/32"	5/8"	1 3/16"	2 13/64"



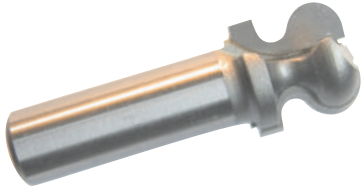
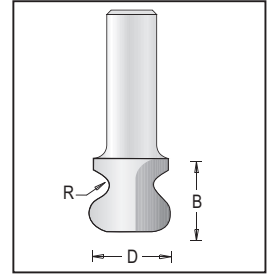


Finger Grip Bits, 2 Flutes



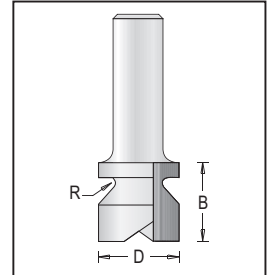
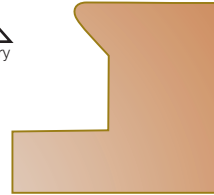
Tool no.	D	Shank	B	R	Length
132R4-6	3/4"	1/4"	1/4"	1/4"	1 3/4"
132R4-10	1"	1/4"	3/8"	3/8"	1 3/4"

Finger Grip Router Bits, 2 Flutes



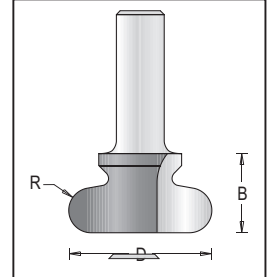
Tool no.	D	Shank	B	R	Length
148R8-19	3/4"	1/2"	3/4"	3/16"	2 3/16"

Finger Grip Router Bits, 2 Flutes



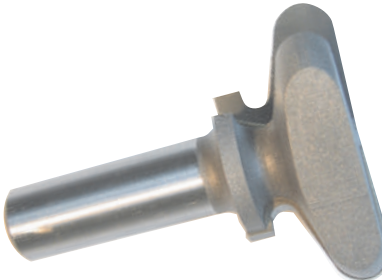
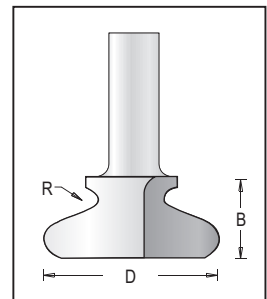
Tool no.	D	Shank	B	R	Length
148R8-22	7/8"	1/2"	13/16"	1/16"	2 5/16"

Finger Grip Router Bits, 2 Flutes



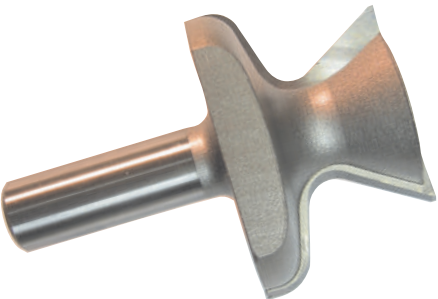
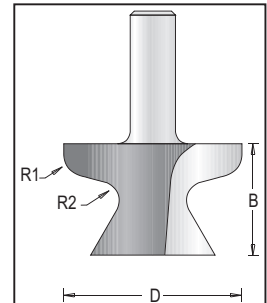
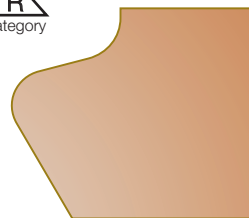
Tool no.	D	Shank	B	R	Length
148R8-38	1 1/2"	1/2"	13/16"	15/64"	2 5/16"

Finger Grip Router Bits, 2 Flutes

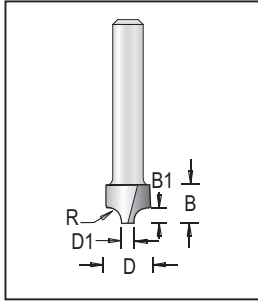


Tool no.	D	Shank	B	R	Length
148R8-44	1 3/4"	1/2"	13/16"	3/16"	2 5/16"

Finger Grip Router Bit, used for doors outer edge, 2 Flutes



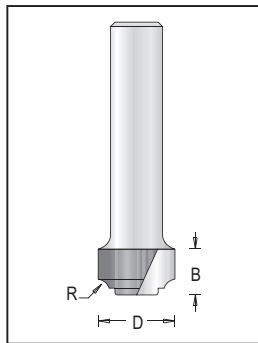
Tool no.	D	Shank	B	R1	R2	Length
148R8-50	2"	1/2"	1 1/4"	3/16"	1/4"	2 3/4"



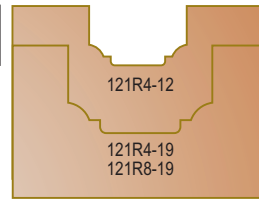
Beading Bit- Plunge Type, 2 Flutes



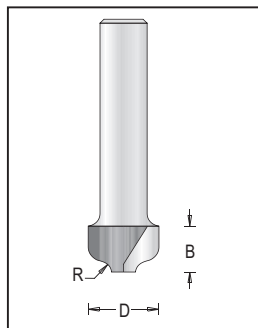
Tool no.	D	D1	Shank	B	B1	R	Length
120R4-10	25/64"	1/8"	1/4"	23/64"	7/64"	3/32"	2"



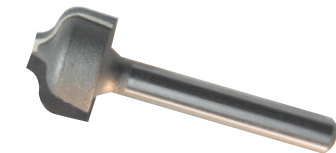
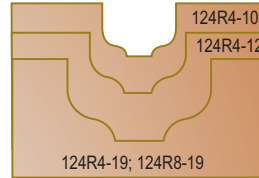
Traditional Bits- Plunge Type, 2 Flutes



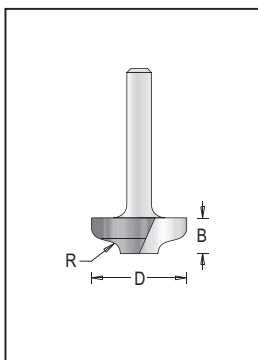
Tool no.	D	Shank	B	R	Length
121R4-12	1/2"	1/4"	3/8"	3/64"	2"
121R4-19	3/4"	1/4"	7/16"	1/16"	2 1/16"
121R8-19	3/4"	1/2"	7/16"	1/16"	2 5/8"



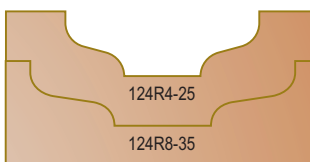
Ogee Bits - Plunge Type, 2 Flutes



Tool no.	D	Shank	B	R	Length
124R4-10	3/8"	1/4"	5/16"	1/16"	1 7/8"
124R4-12	1/2"	1/4"	3/8"	5/64"	2"
124R4-19	3/4"	1/4"	7/16"	1/8"	2 1/8"
124R8-19	3/4"	1/2"	7/16"	1/8"	2 3/4"



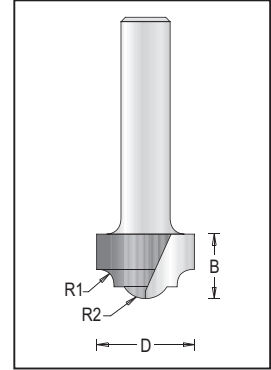
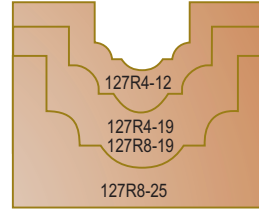
Flat Ogee Bits - Plunge Type, 2 Flutes



Tool no.	D	Shank	B	R	Length
124R4-25	1"	1/4"	3/8"	1/8"	2"
124R8-35	1 3/8"	1/2"	3/8"	1/8"	2 1/4"



Classical Bits- Plunge Type, 2 Flutes

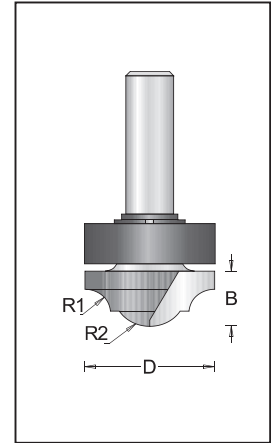
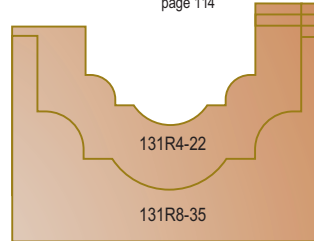
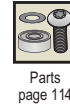


Tool no.	D	Shank	B	R2	R1	Length
127R4-12	1/2"	1/4"	3/8"	5/32"	1/8"	2"
127R4-19	3/4"	1/4"	1/2"	1/4"	3/16"	2 1/16"
127R8-19	3/4"	1/2"	1/2"	1/4"	3/16"	2 3/4"
127R8-25	1"	1/2"	5/8"	5/16"	1/4"	2 7/8"

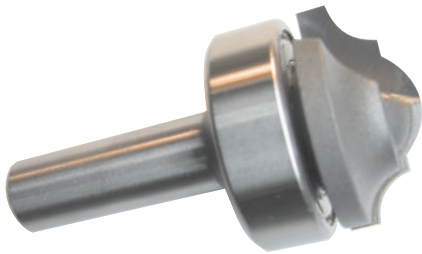


ROUTING
CARBIDE TIPPED

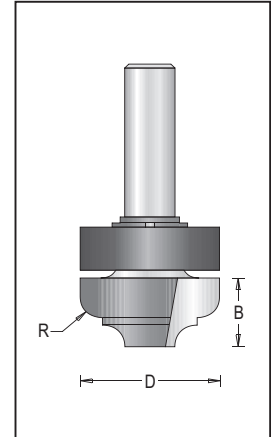
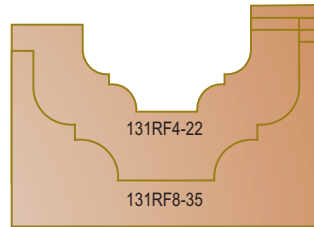
Panelling Groover with Upper Ball Bearing, Round Bottom, 2 Flutes



Tool no.	D	Shank	B	R1	R2	Length	Parts
131R4-22	7/8"	1/4"	1/2"	7/32"	5/32"	2"	X
131R8-35	1 3/8"	1/2"	9/16"	13/32"	1/4"	2 5/8"	DD



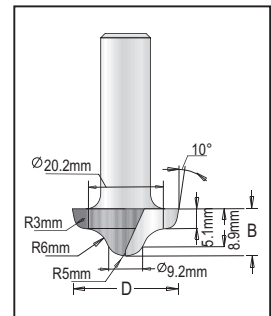
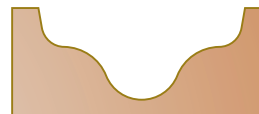
Panelling Groover with Upper Ball Bearing, Flat Bottom, 2 Flutes



Tool no.	D	Shank	B	R	Length	Parts
131RF4-22	7/8"	1/4"	3/8"	9/64"	2"	X
131RF8-35	1 3/8"	1/2"	9/16"	13/64"	2 5/8"	DD

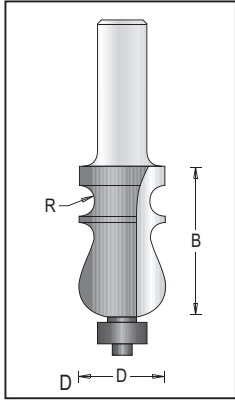


Ogee Bits-Plunge Type, 2 Flutes



Tool no.	D	Shank	B	Length
137R4-27	1 1/16"	1/4"	7/16"	2"
137R8-27	1 1/16"	1/2"	7/16"	2 1/4"





Fancy Moulding Bit, 2 Flutes



Category



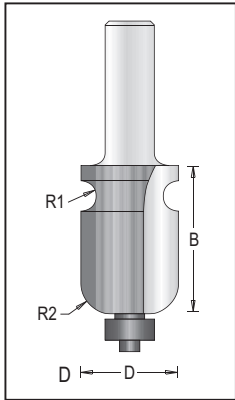
Parts
page 114



Flat Screw



Tool no.	D	Shank	B	R	Length
156R8-22	7/8"	1/2"	1 1/2"	5/32"	3 3/8"



Fancy Moulding Bit, 2 Flutes



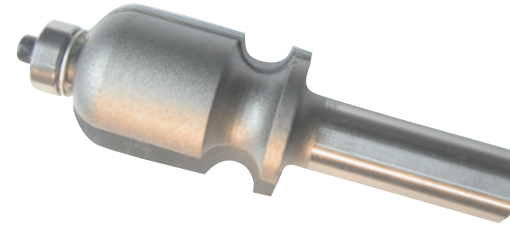
Category



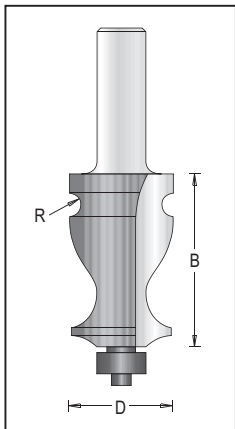
Parts
page 114



Flat Screw



Tool no.	D	Shank	B	R1	R2	Length
156R8-26	1"	1/2"	1 1/2"	5/32"	5/16"	3 3/8"



Fancy Moulding Bit, 2 Flutes



Category



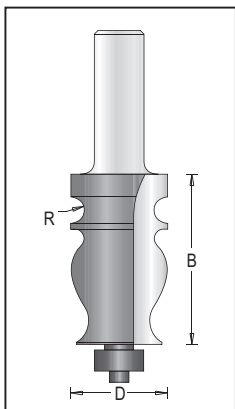
Parts
page 114



Flat Screw



Tool no.	D	Shank	B	R	Length
156R8-27	1 1/16"	1/2"	1 3/4"	1/8"	3 1/2"



Fancy Moulding Bit, 2 Flutes



Category



Parts
page 114



Flat Screw



Tool no.	D	Shank	B	R	Length	Parts
156R8-28	1"	1/2"	1 3/4"	9/64"	3 3/4"	D



Edge Forming Bit, 2 Flutes



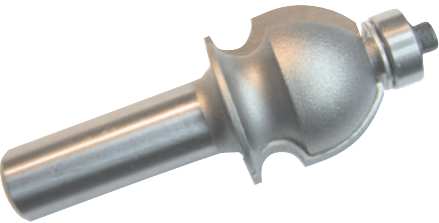
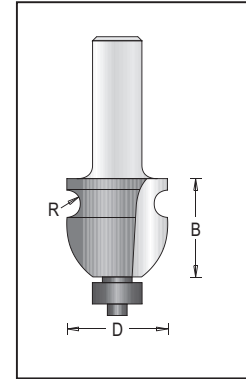
Category



Flat Screw



Parts
page 114



Tool no.	D	Shank	B	R	Length	Parts
156R8-29	1"	1/2"	1"	9/64"	2 7/8"	D

Edge Forming Bit, 2 Flutes



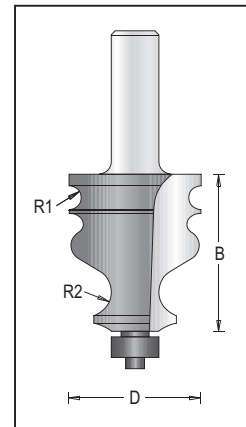
Category



Flat Screw



Parts
page 114



Tool no.	D	Shank	B	R1	R2	Length	Parts
156R8-50	1 3/8"	1/2"	1 5/8"	1/8"	1/4"	3 1/2"	D

Edge Forming Bit, 2 Flutes



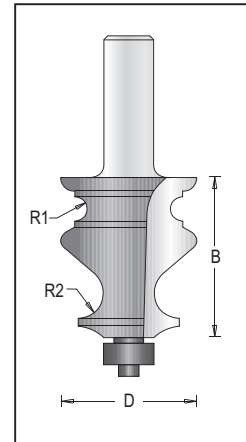
Category



Flat Screw



Parts
page 114



Tool no.	D	Shank	B	R1	R2	Length	Parts
156R8-51	1 3/8"	1/2"	1 5/8"	1/8"	1/4"	3 1/2"	D

Edge Forming Bit, 2 Flutes



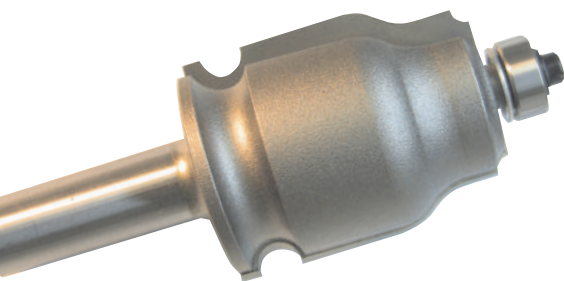
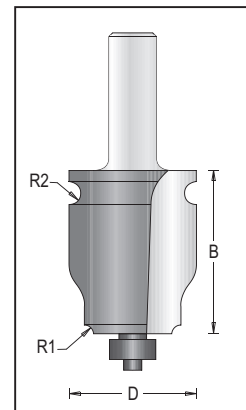
Category



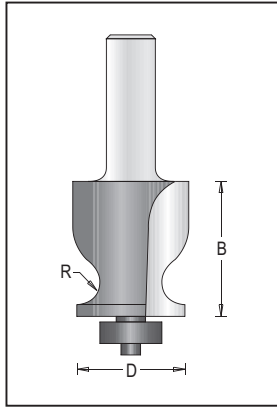
Flat Screw



Parts
page 114



Tool no.	D	Shank	B	R1	R2	Length	Parts
156R8-52	1 3/8"	1/2"	1 3/4"	3/32"	1/8"	3 5/8"	D



Edge Forming Bit, 2 Flutes



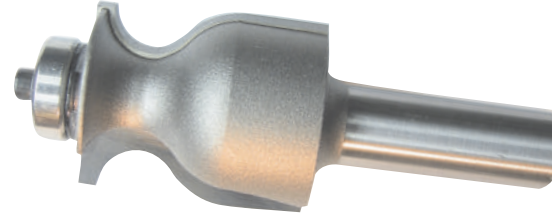
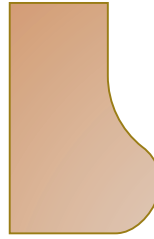
Category



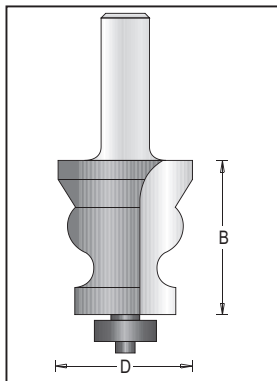
Parts
page114



Flat Screw



Tool no.	D	Shank	B	R	Length	Parts
156R8-56	1 3/16"	1/2"	1 3/8"	1/4"	3 1/4"	N



Edge Forming Bits, 2 Flutes



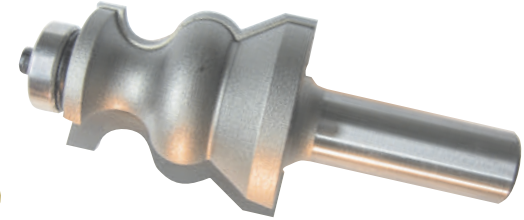
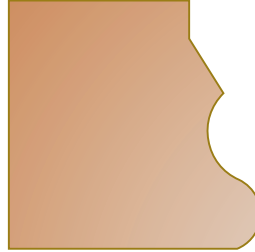
Category



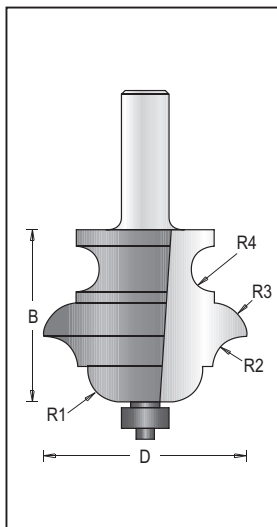
Flat Screw



Parts
page114



Tool no.	D	Shank	B	Length	Parts
156R8-54	1 3/8"	1/2"	1 1/2"	3 3/8"	N



Multiprofile Bit, 1/2" Shank, 2 Flutes



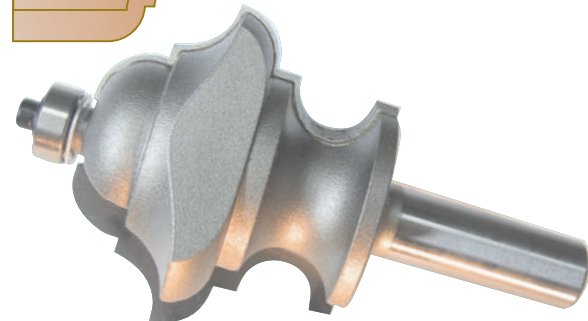
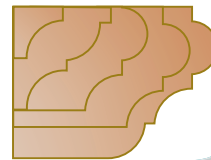
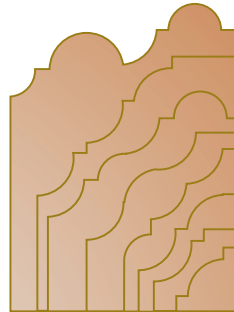
Category



Parts
page114



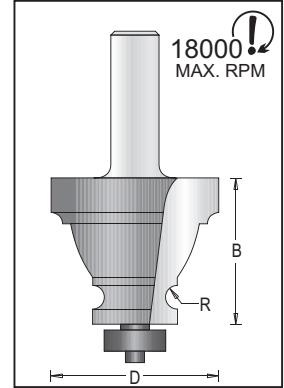
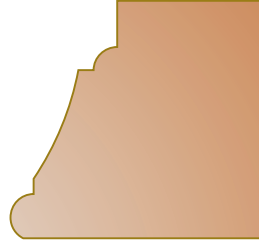
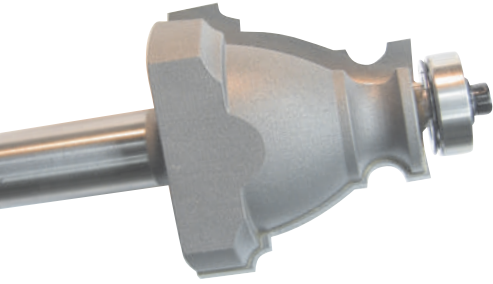
Flat Screw



Tool no.	D	Shank	B	R1	R2	R3	R4	Length	Parts
167R8-54	2 1/8"	1/2"	1 7/8"	23/64"	21/64"	21/64"	1/4"	3 3/4"	D



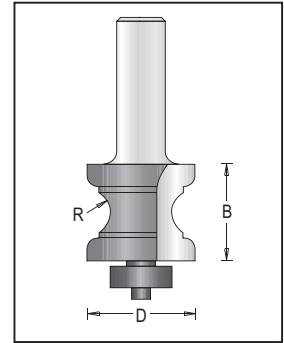
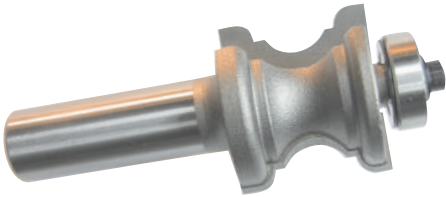
Moulding Bit, 2 Flutes



Tool no.	D	Shank	B	R	Length	Parts
156R8-57	1 3/4"	1/2"	1 1/2"	1/8"	3 7/16"	N

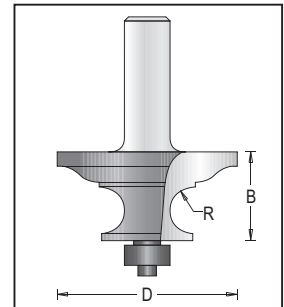
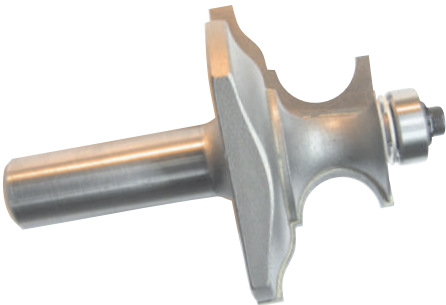
ROUTING
CARBIDE TIPPED

Moulding Bit, 2 Flutes



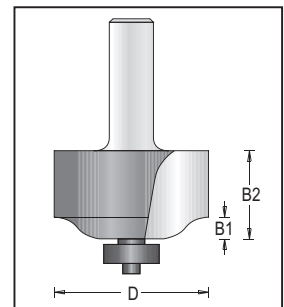
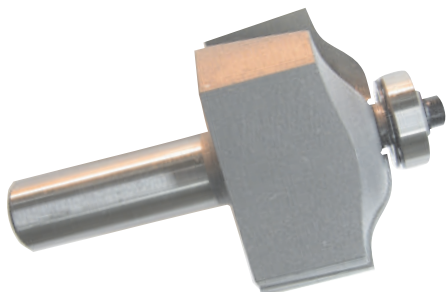
Tool no.	D	Shank	B	R	Length	Parts
185R8-28	1 1/8"	1/2"	1"	15/64"	2 7/8"	N
185R8-32	1 1/4"	1/2"	1 3/16"	5/16"	3 1/8"	N
185R8-35	1 3/8"	1/2"	1 9/16"	33/64"	3 1/2"	N

Moulding Bit, 2 Flutes

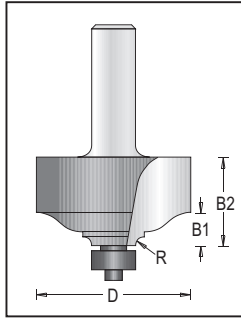


Tool no.	D	Shank	B	R	Length	Parts
156R8-45	2"	1/2"	1"	1/4"	2 7/8"	D

Edge Forming Bits, 2 Flutes



Tool no.	D	Shank	B1	B2	Length	Parts
156R8-60	1 3/4"	1/2"	1/4"	1"	3"	L



Edge Forming Bits, 2 Flutes



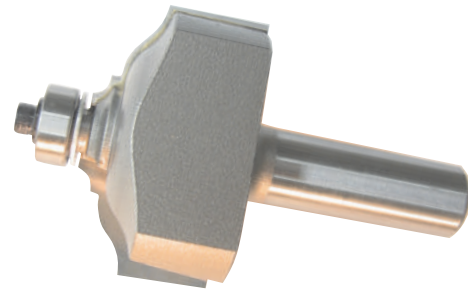
Category



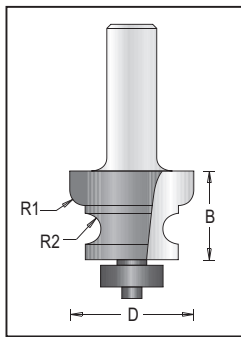
Flat Screw



Parts
page114



Tool no.	D	Shank	B1	B2	R	Length	Parts
156R8-61	1 3/4"	1/2"	3/8"	1"	3/32"	3"	D



Edge Forming Bits, 2 Flutes



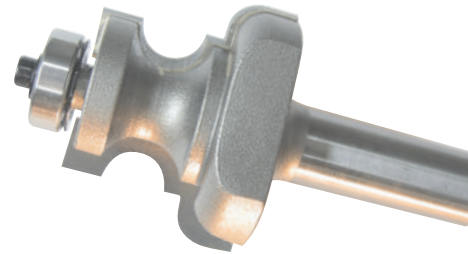
Category



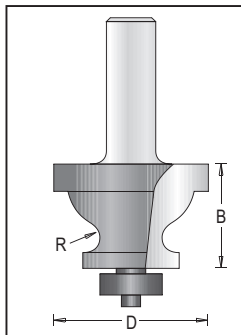
Flat Screw



Parts
page114



Tool no.	D	Shank	B	R1	R2	Length	Parts
156R8-19	13/16"	1/2"	19/32"	5/64"	5/64"	2 1/2"	N
156R8-20	1 1/4"	1/2"	7/8"	5/32"	5/32"	2 3/4"	N
156R8-21	1 9/16"	1/2"	1 3/16"	7/32"	3/16"	3 1/16"	N



Edge Forming Bits, 2 Flutes



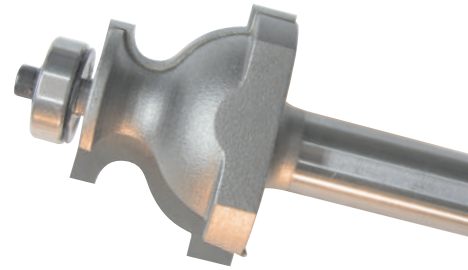
Category



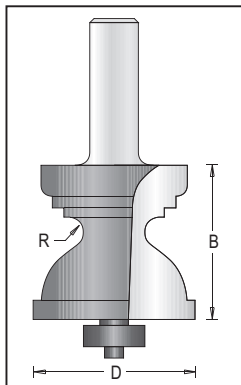
Flat Screw



Parts
page114



Tool no.	D	Shank	B	R	Length	Parts
156R8-41	1 9/16"	1/2"	1 1/16"	5/32"	3"	N



Moulding Bit, 2 Flutes



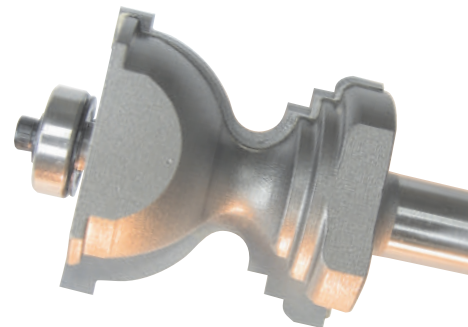
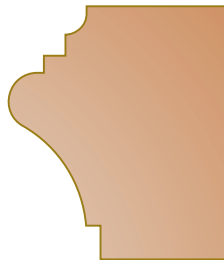
Category



Flat Screw



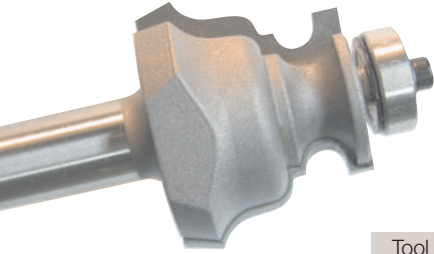
Parts
page114



Tool no.	D	Shank	B	R	Length	Parts
156R8-42	1 5/8"	1/2"	1 9/16"	5/32"	3 1/2"	N



Moulding Bit, 2 Flutes



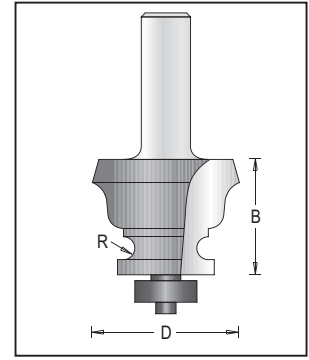
Category



Parts
page114

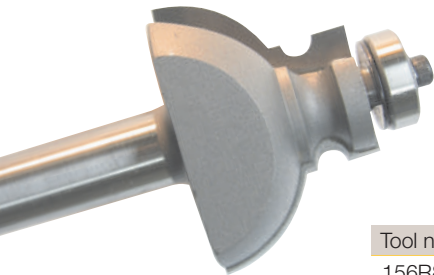


Flat Screw



Tool no.	D	Shank	B	R	Length	Parts
156R8-43	1 1/2"	1/2"	1 3/16"	1/8"	3 1/8"	N

Moulding Bit, 2 Flutes



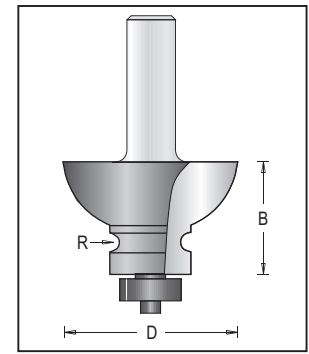
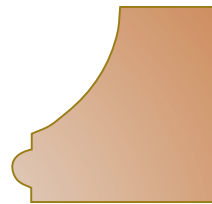
Category



Parts
page114



Flat Screw



Tool no.	D	Shank	B	R	Length	Parts
156R8-44	1 3/4"	1/2"	1 3/16"	3/32"	3 3/8"	N

Moulding Bit, 2 Flutes



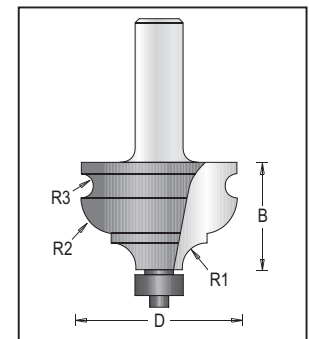
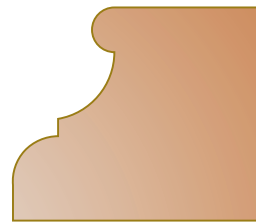
Category



Parts
page114

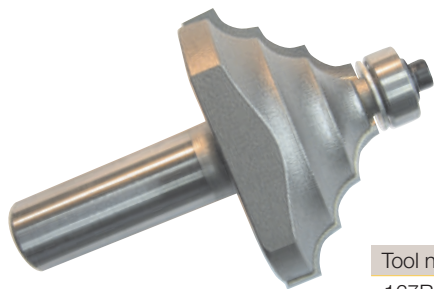


Flat Screw



Tool no.	D	Shank	B	R1	R2	R3	Length	Parts
167R8-42	1 5/8"	1/2"	1 1/8"	1/4"	3/8"	1/8"	3"	D

Moulding Bit, 2 Flutes



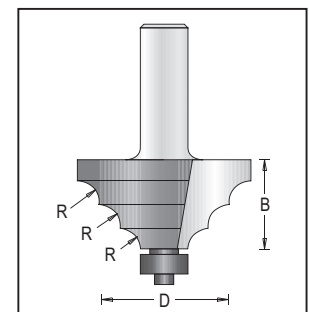
Category



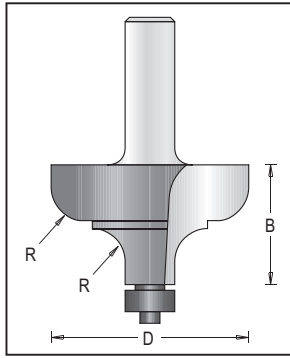
Parts
page114



Flat Screw



Tool no.	D	Shank	B	R	Length	Parts
167R8-47	1 7/8"	1/2"	15/16"	15/64"	2 7/8"	D



Moulding Bit, 2 Flutes



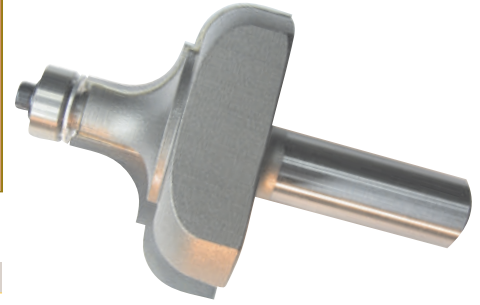
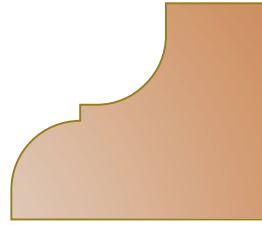
Category



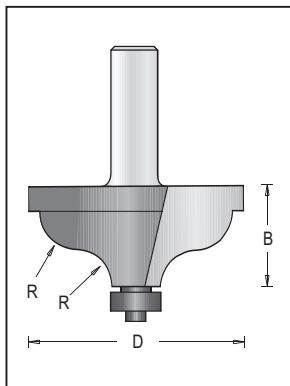
Flat Screw



Parts
page 114



Tool no.	D	Shank	B	R	Length	Parts
167R8-51	2"	1/2"	1 7/32"	21/64"	3 1/8"	D



Moulding Bit, 2 Flutes



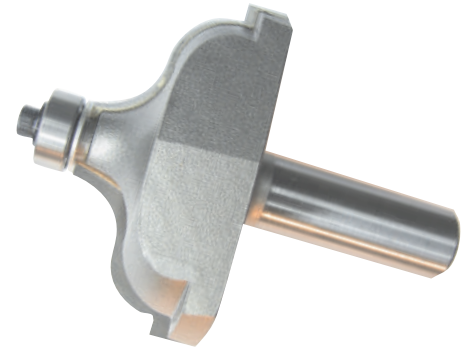
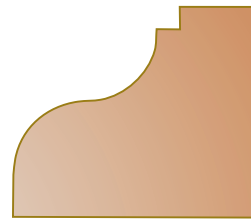
Category



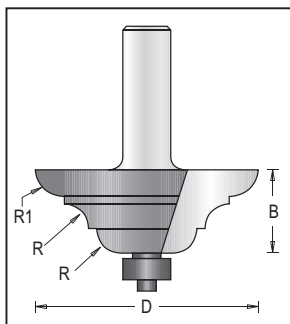
Flat Screw



Parts
page 114



Tool no.	D	Shank	B	R	Length	Parts
167R8-57	2 1/4"	1/2"	1"	3/8"	2 7/8"	D



Moulding Bit, 2 Flutes



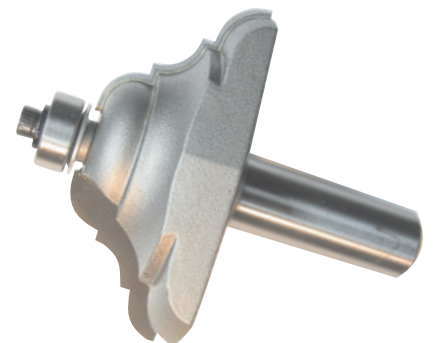
Category



Flat Screw



Parts
page 114

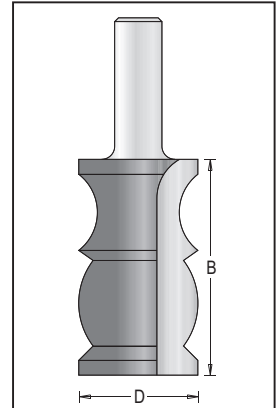


Tool no.	D	Shank	B	R	R1	Length	Parts
167R8-59	2 5/16"	1/2"	7/8"	1/4"	19/64"	2 3/4"	D

Routing

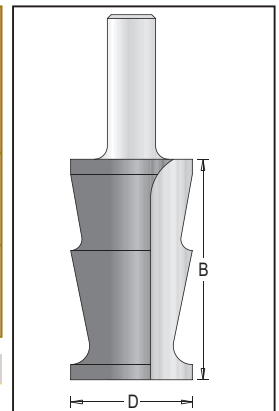
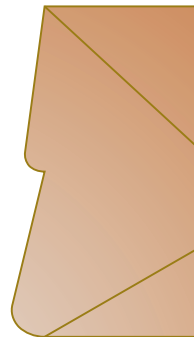
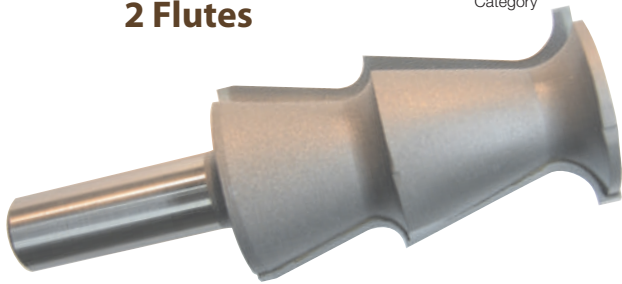


Crown Moulding Bit, 2 Flutes



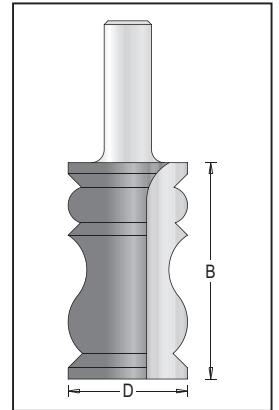
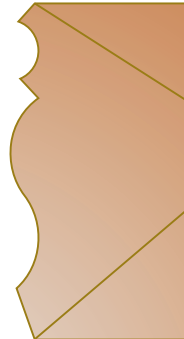
Tool no.	D	Shank	B	Length
156R8-33	1 1/4"	1/2"	2 1/4"	3 3/4"

Crown Moulding Bit, 2 Flutes



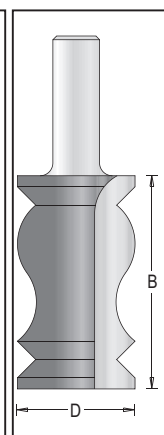
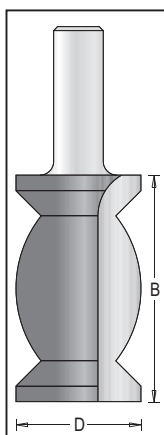
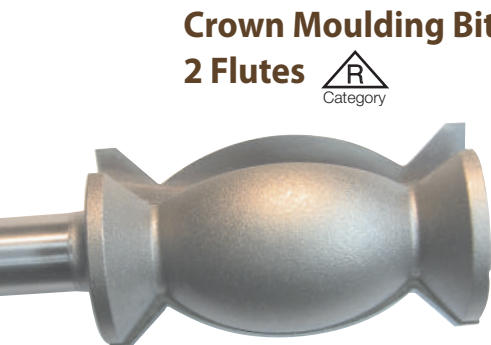
Tool no.	D	Shank	B	Length
156R8-30	1 1/4"	1/2"	2 1/4"	3 3/4"

Crown Moulding Bit, 2 Flutes



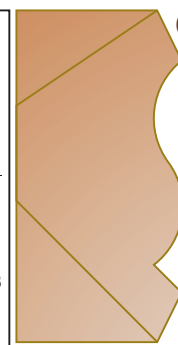
Tool no.	D	Shank	B	Length
156R8-34	1 1/4"	1/2"	2 1/4"	3 3/4"

Crown Moulding Bit, 2 Flutes



Tool no.	D	Shank	B	Length
156R8-31	1 1/4"	1/2"	2 1/4"	3 3/4"

Crown Moulding Bit, 2 Flutes

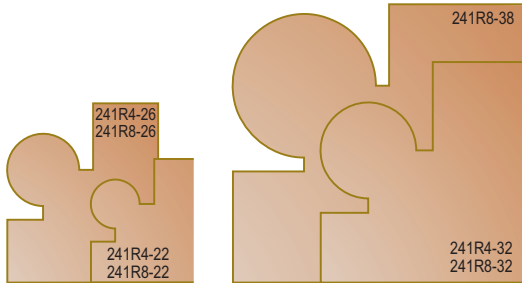
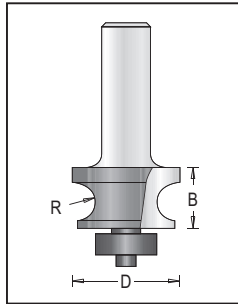


Tool no.	D	Shank	B	Length
156R8-32	1 1/4"	1/2"	2 1/4"	3 3/4"

ROUTING
CARBIDE TIPPED



Corner Beading Bits with Ball Bearing Guide, 2 Flutes



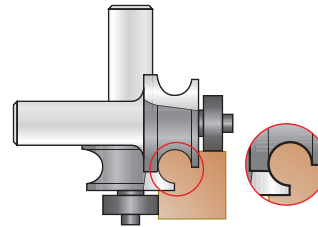
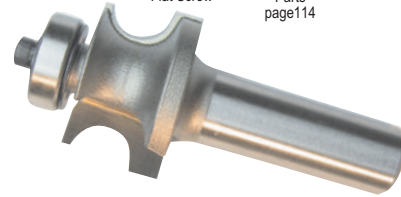
Category



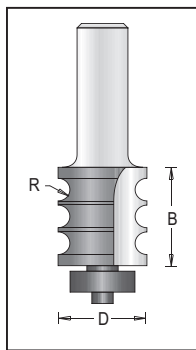
Flat Screw



Parts
page114



Tool no.	D	Shank	B	R	Length	Parts
241R4-22	7/8"	1/4"	9/16"	1/8"	2 1/8"	O
241R8-22	7/8"	1/2"	9/16"	1/8"	2 1/2"	O
241R4-26	1 1/16"	1/4"	5/8"	3/16"	2 1/4"	N
241R8-26	1 1/16"	1/2"	5/8"	3/16"	2 5/8"	N
241R4-32	1 1/4"	1/4"	3/4"	1/4"	2 3/8"	N
241R8-32	1 1/4"	1/2"	3/4"	1/4"	2 5/8"	N
241R8-38	1 1/2"	1/2"	1"	3/8"	3"	N



Triple Beading Bits with Ball Bearing Guide, 2 Flutes



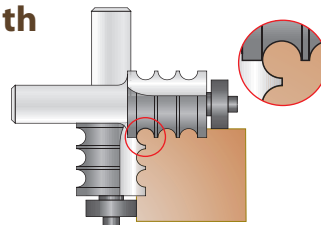
Category



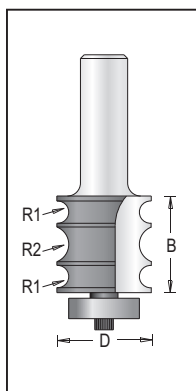
Parts
page114



Flat Screw



Tool no.	D	Shank	B	R	Length	Parts
160R4-22	7/8"	1/4"	1"	1/8"	2 1/2"	N
160R8-22	7/8"	1/2"	1"	1/8"	2 7/8"	N



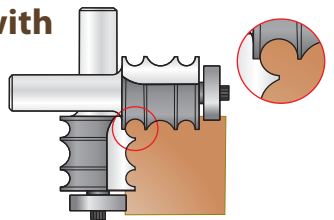
Triple Beading Bits with Ball Bearing Guide, 2 Flutes



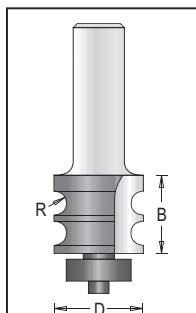
Category



Parts
page114



Tool no.	D	Shank	B	R1	R2	Length	Parts
160R4-25	1"	1/4"	1"	1/8"	3/16"	2 1/4"	T
160R8-25	1"	1/2"	1"	1/8"	3/16"	2 1/4"	T



Double Beading Bit with Ball Bearing Guide, 2 Flutes



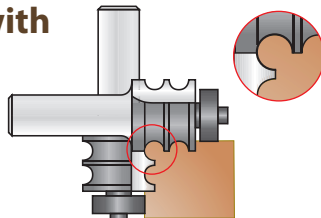
Category



Parts
page114



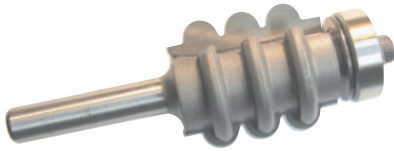
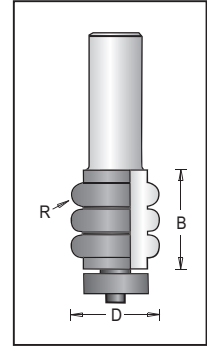
Flat Screw



Tool no.	D	Shank	B	R	Length	Parts
160R8-21	7/8"	1/2"	3/4"	1/8"	2 5/8"	N



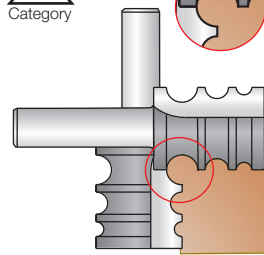
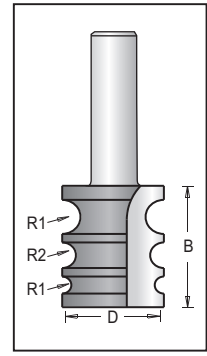
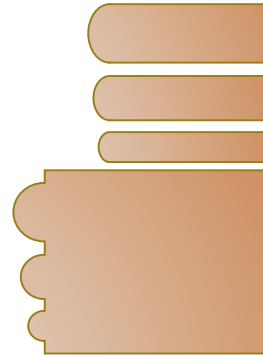
Convex Beading Bits, 2 Flutes



Tool no.	D	Shank	B	R	Length	Parts
164R4-22	7/8"	1/4"	1"	1/8"	2 1/2"	N
164R8-22	7/8"	1/2"	1"	1/8"	2 7/8"	N

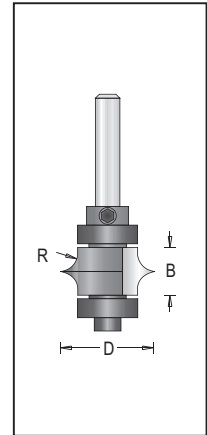
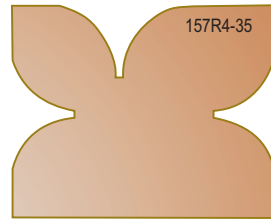
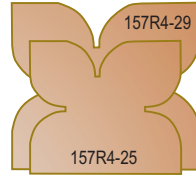
ROUTING
CARBIDE TIPPED

Variable-Beading Bits, 2 Flutes



Tool no.	D	Shank	B	R1	R2	R3	Length
161R4-22	7/8"	1/4"	1 1/8"	5/32"	1/8"	5/64"	2 1/4"

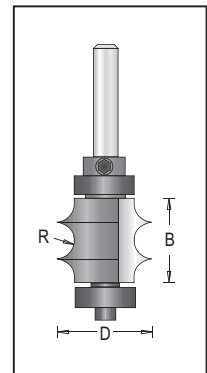
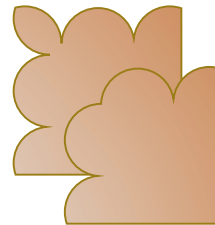
Beading Bits, Leaf-Edge Style, 2 Flutes



Tool no.	D	Shank	B	R	Length
157R4-25	1"	1/4"	1/2"	3/16"	2 1/2"
157R4-29	1 1/8"	1/4"	5/8"	1/4"	2 5/8"
157R4-35	1 3/8"	1/4"	7/8"	3/8"	2 7/8"

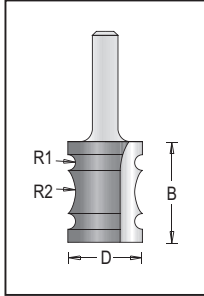
Replacement Parts: Ball Bearing: BB-16; Lock Ring: 1970110;
Screw: 1930211; Washer: 1920040; Screw: 1930080

Beading Bit, Double Leaf Edge, 2 Flutes



Tool no.	D	Shank	B	R	Length
157RD4-1	1"	1/4"	7/8"	3/16"	3"

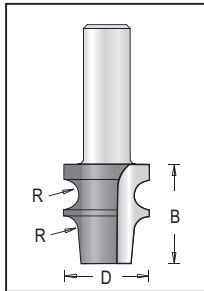
Replacement Parts: Ball Bearing: BB-16; Lock Ring: 1970110;
Screw: 1930211; Washer: 1920040; Screw: 1930080



Triple Beading Bit, 2 Flutes



Tool no.	D	Shank	B	R1	R2	Length
161R4-19	3/4"	1/4"	1"	5/64"	1/4"	2 1/8"



Edge Beading Bits, 2 Flutes



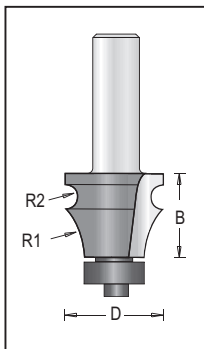
Parts
page 114



Flat Screw



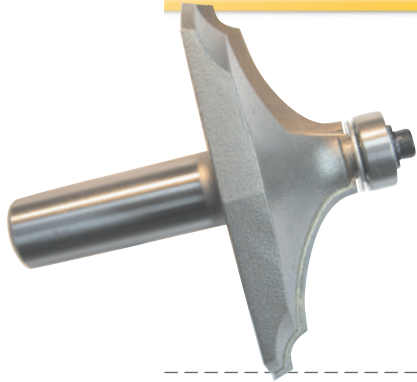
Tool no.	D	Shank	B	R	Length
162R4-22	7/8"	1/4"	1 1/32"	5/32"	2 5/16"
162R8-22	7/8"	1/2"	1 1/32"	5/32"	2 1/2"



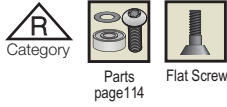
Edge Beading Bits with Ball Bearing Guide, 2 Flutes



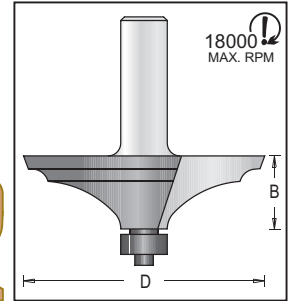
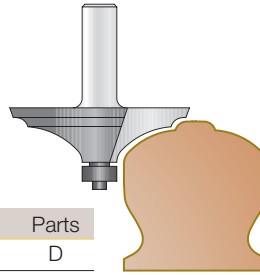
Tool no.	D	Shank	B	R1	R2	Length	Parts
162R8-1	1"	1/2"	7/8"	1"	3/32"	2 3/4"	N
162R8-3	1"	1/2"	7/8"	9/16"	5/32"	2 3/4"	N
162R8-4	1"	1/2"	7/8"	3/8"	3/16"	2 3/4"	N



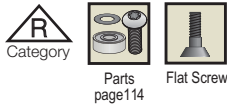
Handrail Bit, 2 Flutes



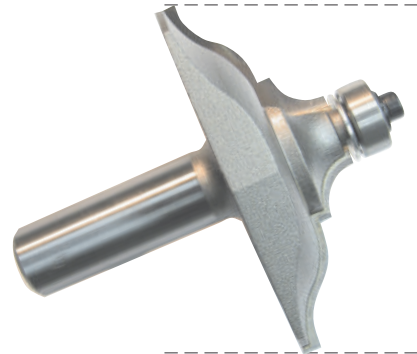
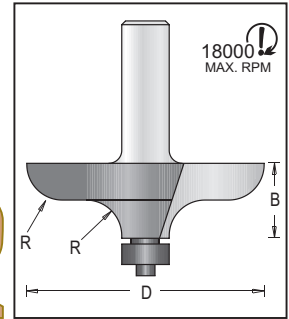
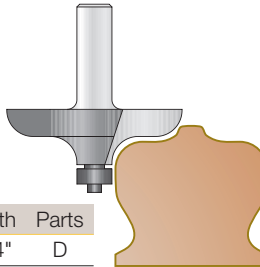
Tool no.	D	Shank	B	Length	Parts
166R8-66	2 5/8"	1/2"	3/4"	2 5/8"	D



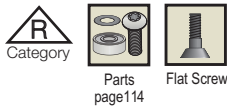
Handrail Bit, 2 Flutes



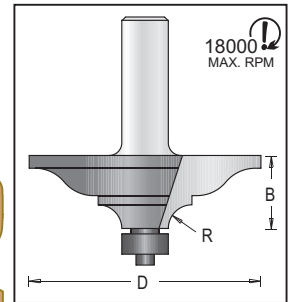
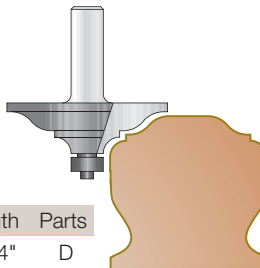
Tool no.	D	Shank	B	R	Length	Parts
166R8-62	2 1/2"	1/2"	25/32"	3/8"	2 3/4"	D



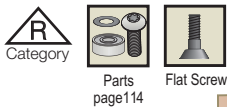
Handrail Bit, 2 Flutes



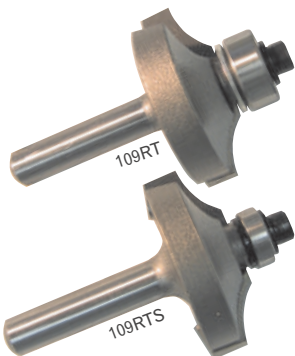
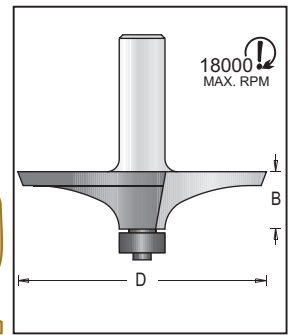
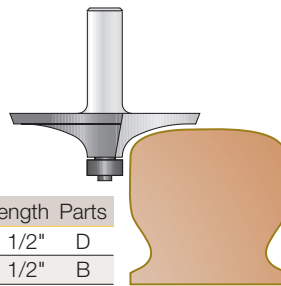
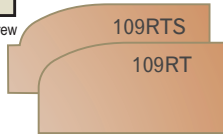
Tool no.	D	Shank	B	R	Length	Parts
166R8-63	2 1/2"	1/2"	25/32"	1/4"	2 3/4"	D



Handrail Bit, 2 Flutes



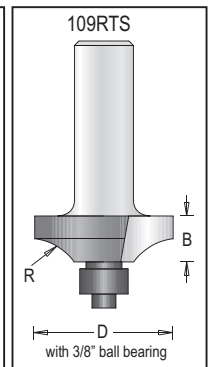
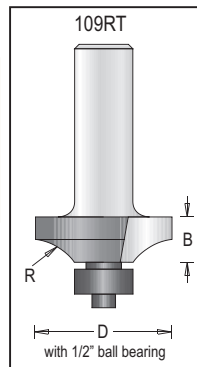
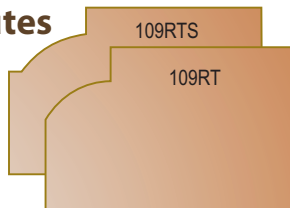
Tool no.	D	Shank	B	R	Length	Parts
109RT8-64	2 1/2"	1/2"	11/16"	1 7/8"	2 1/2"	D
109RTS8-64	2 1/2"	1/2"	11/16"	1 7/8"	2 1/2"	B

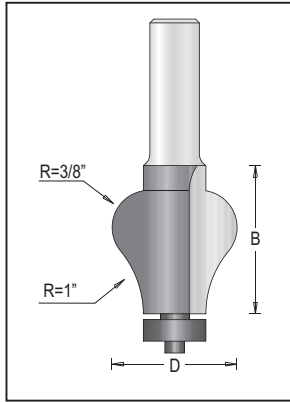


Beading Bits, 2 Flutes



Tool no.	D	Shank	B	R	Length	Parts
109RT4-30	1 3/16"	1/4"	3/8"	15/32"	2 1/16"	D
109RT8-30	1 3/16"	1/2"	3/8"	15/32"	2 1/16"	D
109RTS4-30	1 3/16"	1/4"	3/8"	15/32"	2 1/16"	B
109RTS8-30	1 3/16"	1/2"	3/8"	15/32"	2 1/16"	B





Handrail Bit, 2 Flutes



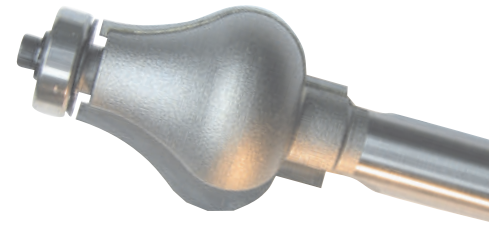
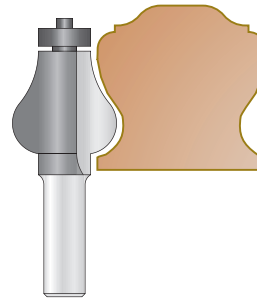
Category



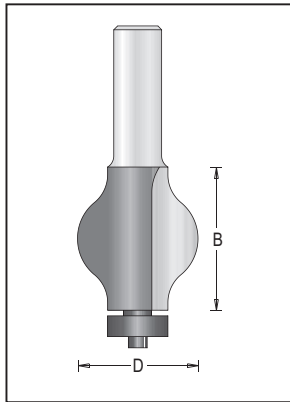
Flat Screw



Parts
page114



Tool no.	D	Shank	B	Length	Parts
166R8-31	1 1/4"	1/2"	1 1/2"	3 3/8"	N



Handrail Bit, 2 Flutes



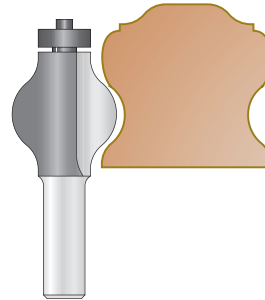
Category



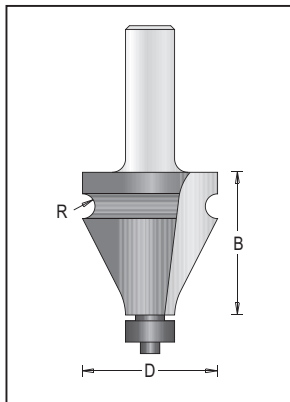
Flat Screw



Parts
page114



Tool no.	D	Shank	B	Length	Parts
166R8-32	1 1/4"	1/2"	1 1/2"	3 3/8"	N



Handrail Bit, 2 Flutes



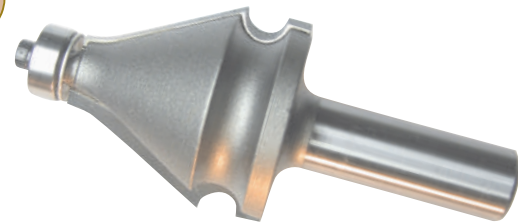
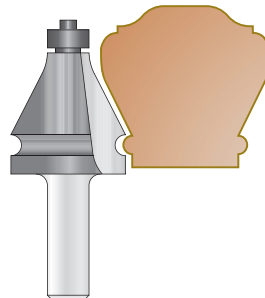
Category



Flat Screw



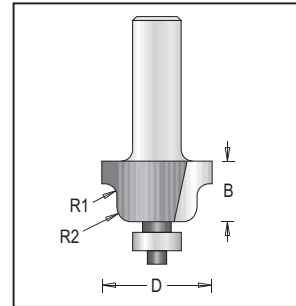
Parts
page114



Tool no.	D	Shank	B	R	Length	Parts
166R8-35	1 3/8"	1/2"	1 1/2"	1/8"	3 3/8"	N



Roman Ogee Bit, 2 Flutes

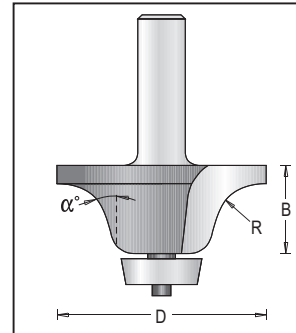
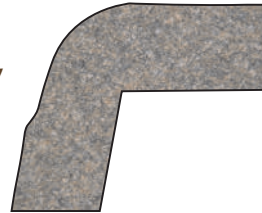
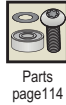


For Solid Surface

Tool no.	D	Shank	B	R1	R2	Length	Parts
113R8-29	1 1/8"	1/2"	5/8"	1/8"	5/32"	2 9/16"	FF

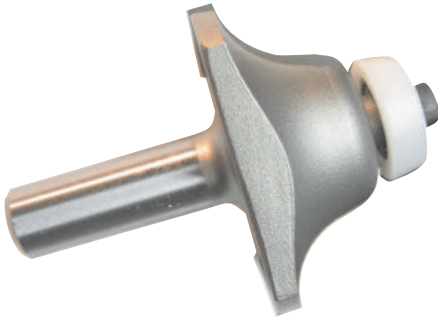


Roman Ogee Undermount Bowl Bits, 2 Flutes

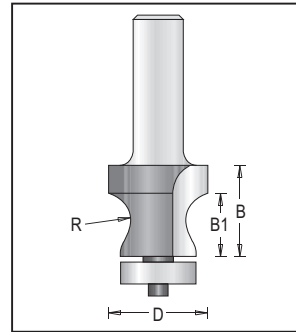
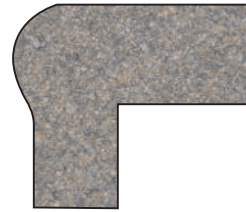
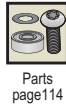


For Solid Surface

Tool no.	D	Shank	B	α	R	Length	Parts
152R8-54	2 1/8"	1/2"	1"	15°	1/2"	3"	JJ
152R8-57	2 3/8"	1/2"	1 1/4"	15°	9/16"	3 3/8"	JJ



Counter Top Bits, 2 Flutes

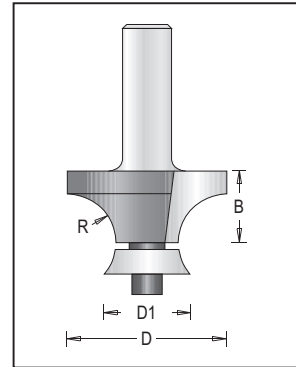
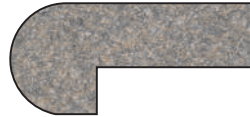
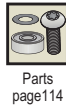


For Solid Surface

Tool no.	D	Shank	B	B1	R	Length	Parts
155R8-25	1"	1/2"	7/8"	5/8"	5/16"	2 7/8"	HH
155R8-26	1"	1/2"	1 1/8"	15/16"	5/16"	3 1/16"	HH

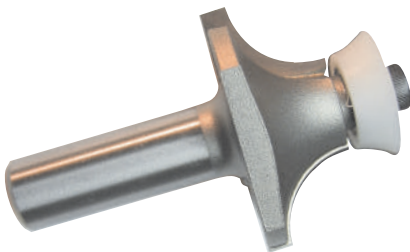


Corner Rounding Bits w/Radius Bearing, 2 Flutes

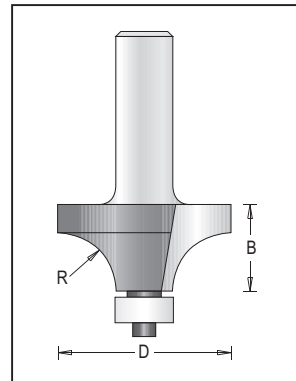
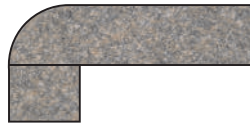


For Solid Surface

Tool no.	D	D1	Shank	B	R	Length	Parts
109RD8-12	1 5/8"	5/8"	1/2"	47/64"	1/2"	2 1/16"	LL
109RD8-19	2 1/8"	5/8"	1/2"	63/64"	3/4"	2 29/32"	MM
109RD8-25	2 5/8"	5/8"	1/2"	1 15/64"	1"	2 1/16"	NN

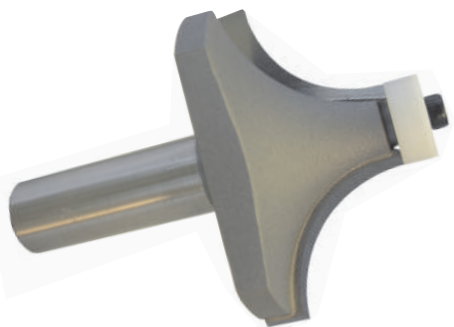


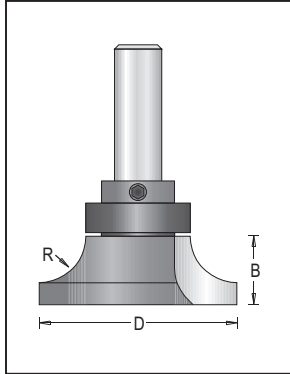
Rounding Over Bits, 2 Flutes



For Solid Surface

Tool no.	D	Shank	B	R	Length	Parts
109RC8-8	1 1/8"	1/2"	1/2"	5/16"	2 5/16"	FF
109RC8-10	1 1/4"	1/2"	5/8"	3/8"	2 7/16"	FF
109RC8-12	1 1/2"	1/2"	3/4"	1/2"	2 9/16"	FF
109RC8-19	2"	1/2"	1"	3/4"	2 3/4"	FF





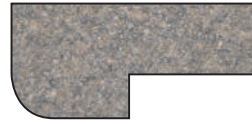
Inverted Rounding Over Bits, 2 Flutes



Category

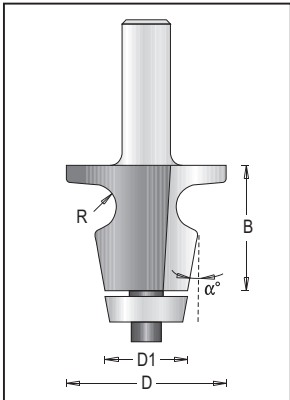
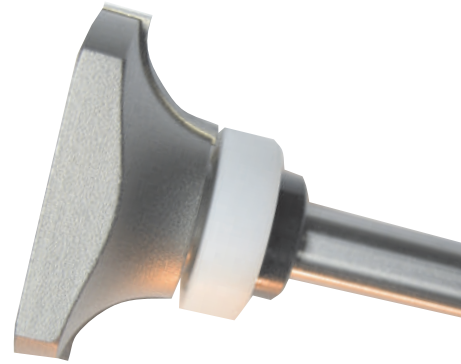


Parts
page114



For Solid Surface

Tool no.	D	Shank	B	R	Length	Parts
159R8-12	2 1/8"	1/2"	3/4"	1/2"	2 7/8"	PP
159R8-19	2 5/8"	1/2"	1"	3/4"	3"	PP



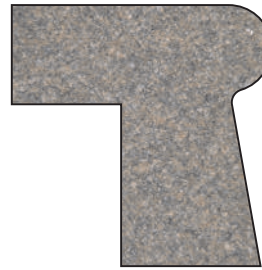
Undermount Profile Bowl Bit, 2 Flutes



Category

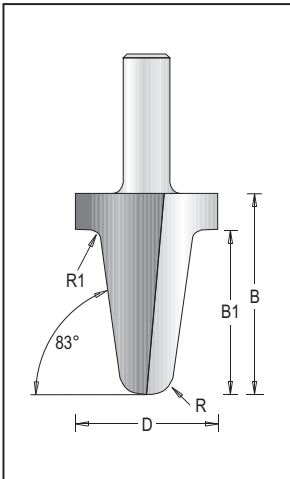


Parts
page114



For Solid Surface

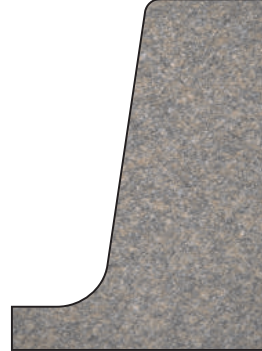
Tool no.	D	D1	Shank	B	R	α	Length	Parts
155R8-421	3/8"	7/8"	1/2"	1 5/16"	15/64"	10°	3 5/16"	II



Corner Cove Bits, 2 Flutes

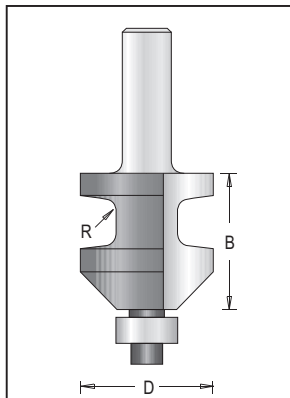
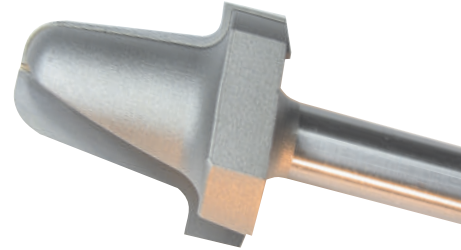


Category



For Solid Surface

Tool no.	D	Shank	B	B1	R	R1	Length
155R8-39A	1 17/32"	1/2"	1 37/64"	1 3/16"	15/64"	1/8"	3 1/16"
155R8-39B	1 17/32"	1/2"	2 5/32"	1 25/32"	15/64"	1/8"	3 11/16"



Bevel Hob Bit, 2 Flutes



Category

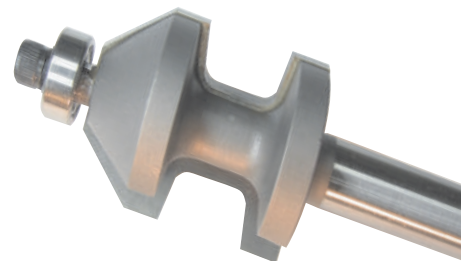


Parts
page114



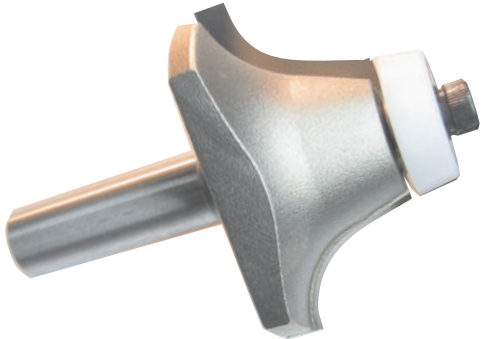
For Solid Surface

Tool no.	D	Shank	B	R	Length	Parts
155R8-35	1 3/8"	1/2"	1 27/64"	1/8"	2 7/8"	J

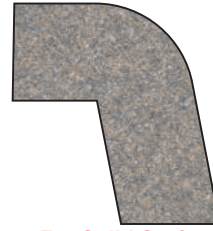




Rounding Over Undermount Bowl Bits, 2 Flutes

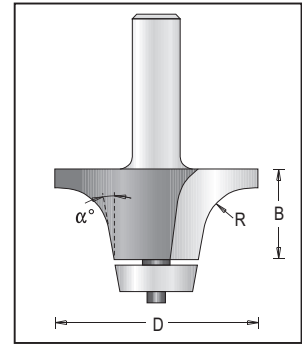


Parts page114

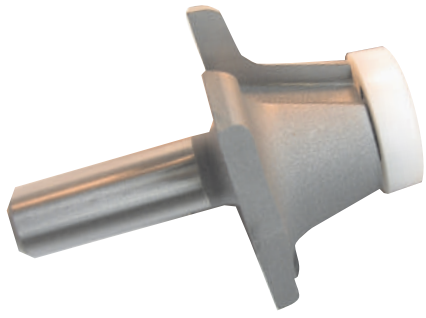


For Solid Surface

Tool no.	D	Shank	B	R	α	Length	Parts
153R8-54	2 1/8"	1/2"	1"	1/2"	18°	3 1/16"	JJ
153R8-57	2 1/4"	1/2"	1 1/4"	9/16"	18°	3 5/16"	JJ



Undermount Bowl Bit, 2 Flutes

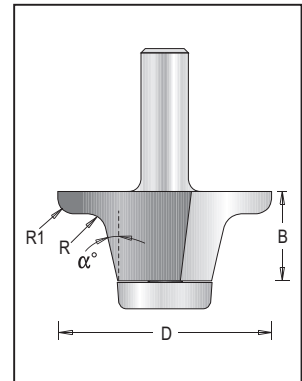


Parts page114

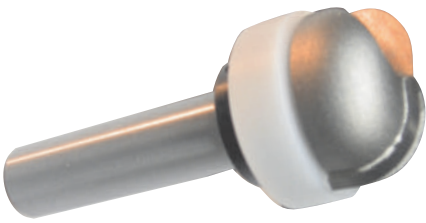


For Solid Surface

Tool no.	D	Shank	B	R	R1	α	Length	Parts
153R8-57B	2 1/4"	1/2"	15/16"	13/64"	5/32"	13°	2 51/64"	OO



Core Box Bit, 2 Flutes

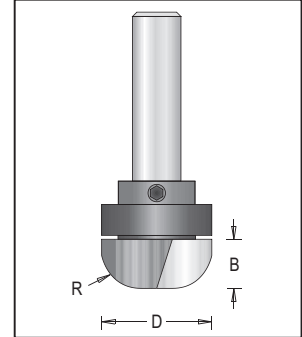


Parts page114

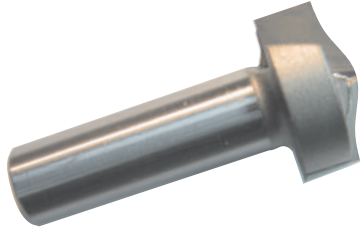


For Solid Surface

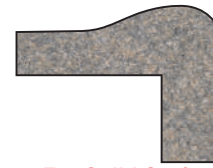
Tool no.	D	Shank	B	R	Length	Parts
106RC8-10	1 1/8"	1/2"	1/2"	25/64"	2 7/8"	PP



Corner Top Bit-No Drip, 2 Flutes

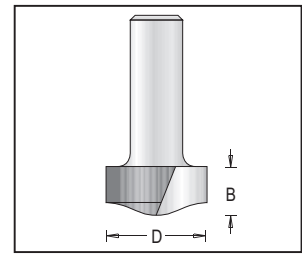


Parts page114

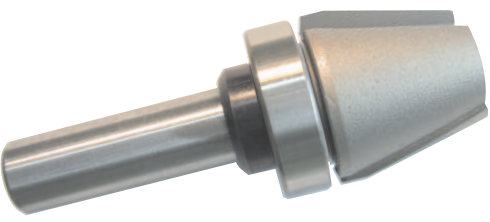


For Solid Surface

Tool no.	D	Shank	B	Length
130R8-25	1"	1/2"	1/2"	2 1/8"



Topmounted Bowl & Countertop Bits, 2 Flutes

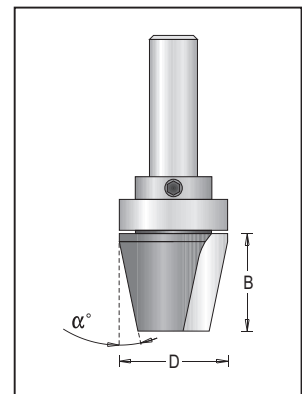


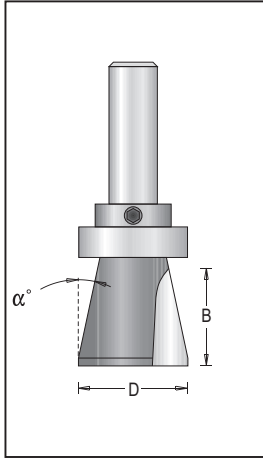
Parts page114



For Solid Surface

Tool no.	D	Shank	B	α	Length	Parts
104RCR8-28	1 1/8"	1/2"	1"	12°	3 1/8"	BB





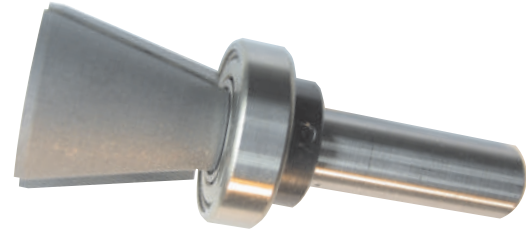
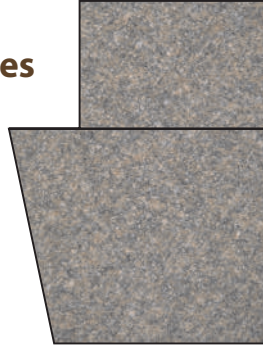
Topmounted Bowl & Countertop Bits, 2 Flutes



Category

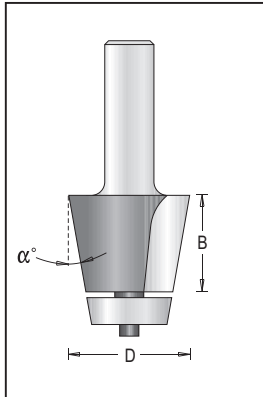


Parts
page114



For Solid Surface

Tool no.	D	Shank	B	α	Length	Parts
104RC8-28	1 1/8"	1/2"	1"	12°	3 1/8"	BB



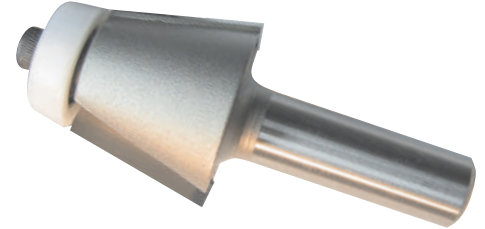
Bevel Undermount Bowl Bit, 2 Flutes



Category

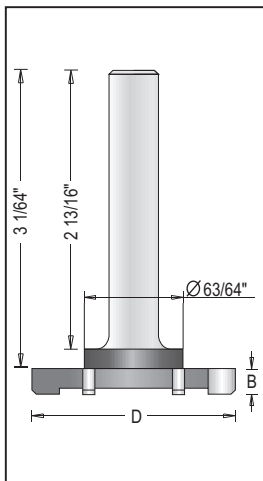


Parts
page114



For Solid Surface

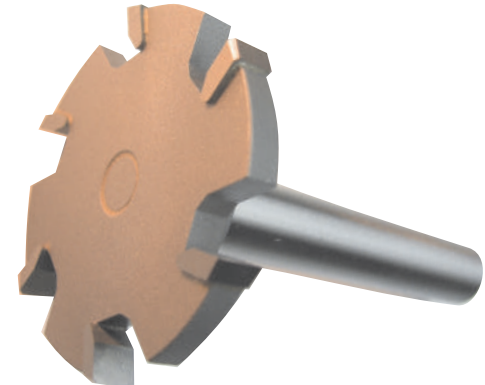
Tool no.	D	Shank	B	α	Length	Parts
151R8-22	1 1/4"	1/2"	1"	12°	3 3/16"	JJ



Bowl & Countertop Trim Bit, 6 Flutes



Category

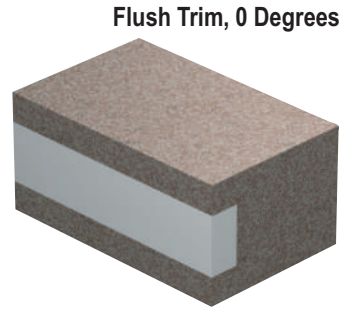
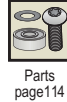


For Solid Surface

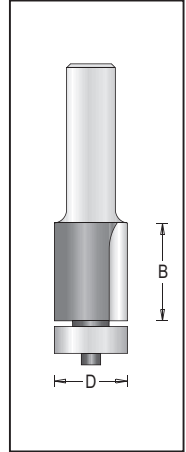
Tool no.	D	Shank	B	Length
163R8-52	2 1/16"	1/2"	1/4"	3 5/16"



Inlay Trimming Bits with Ball Bearing Guide, 2 Flutes



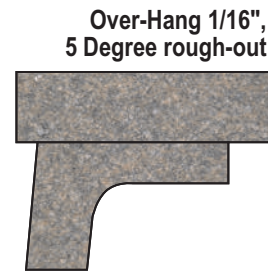
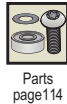
Flush Trim, 0 Degrees



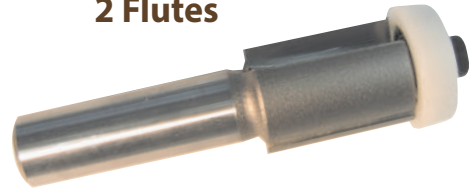
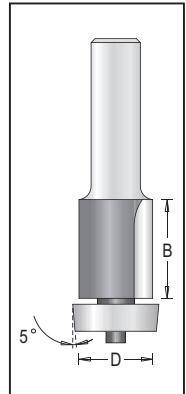
For Solid Surface

Tool no.	D	Shank	B	Length	Parts
101RK8-19	3/4"	1/2"	1"	3"	HH

Inlay Trimming Bits with Ball Bearing Guide, 2 Flutes



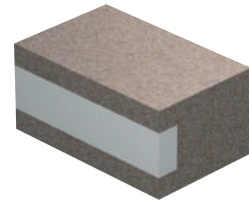
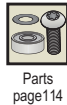
Over-Hang 1/16", 5 Degree rough-out



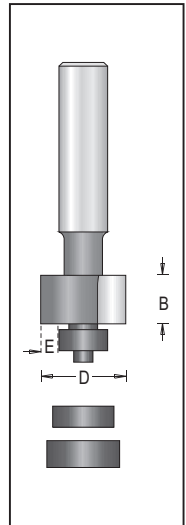
For Solid Surface

Tool no.	D	Shank	B	Length	Parts
101RK8-22	3/4"	1/2"	1"	3"	KK

Face Inlay Bits, 2 Flutes



For Solid Surface



Tool no.	D	Shank	B	E	Length	Parts
154R8-6-2	7/8"	1/2"	1/4"	1/16"	3 1/16"	R
154R8-6-3	7/8"	1/2"	1/4"	1/8"	3"	K
154R8-6-4	7/8"	1/2"	1/4"	3/16"	3"	G
154R8-12-2	7/8"	1/2"	1/2"	1/16"	3 1/4"	R
154R8-12-3	7/8"	1/2"	1/2"	1/8"	3 1/4"	K
154R8-12-4	7/8"	1/2"	1/2"	3/16"	3 1/4"	G
154R8-19-2	7/8"	1/2"	3/4"	1/16"	3 7/16"	R
154R8-19-3	7/8"	1/2"	3/4"	1/8"	3 1/2"	K
154R8-19-4	7/8"	1/2"	3/4"	3/16"	3 1/2"	G

Tool no.	D	Shank	B	E	Length	Parts
154R8-19-3	3/4"	1/8"	3/4"	1/16"	3 1/2"	R
154R8-19-2	3/4"	1/8"	3/4"	1/8"	3 1/2"	K
154R8-12-4	1/2"	3/16"	1/2"	3/16"	3 1/4"	G
154R8-6-3	1/4"	1/8"	1/4"	1/8"	3"	K
154R8-6-4	1/4"	3/16"	1/4"	3/16"	3"	G
154R8-12-2	1/2"	1/16"	1/2"	1/16"	3 1/4"	R
154R8-12-3	1/2"	1/8"	1/2"	1/8"	3 1/4"	K

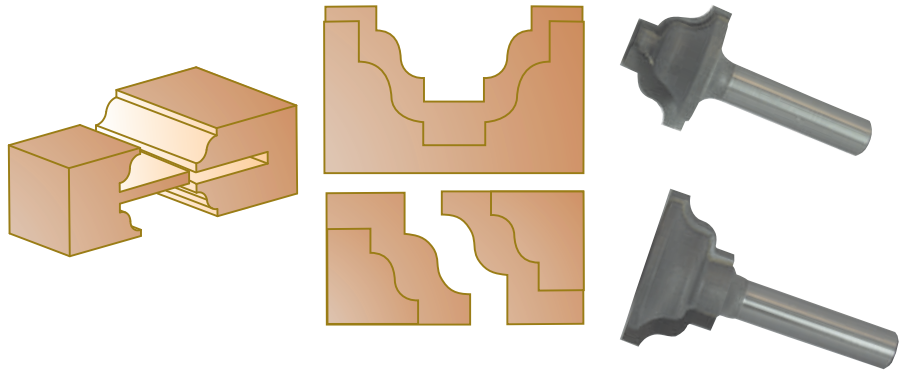
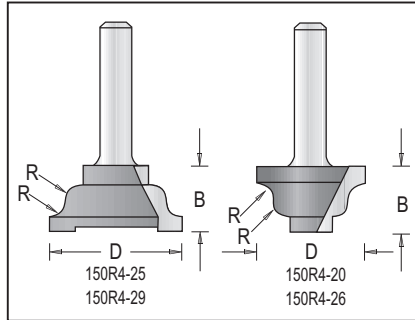


Rail & Stile /Cope and Stick, 2 Flutes

 Dealer Net Price in effect

Cope and stick construction is a frame and panel technique often used in the making of doors, wainscoting, and other decorative features for cabinets, furniture and homes.

In cope and stick construction, all the parts of the frame are given a decorative profile on the edge to be jointed to the panel, and the horizontal parts are also given what is known as a cope cut across the end grain of the wood.

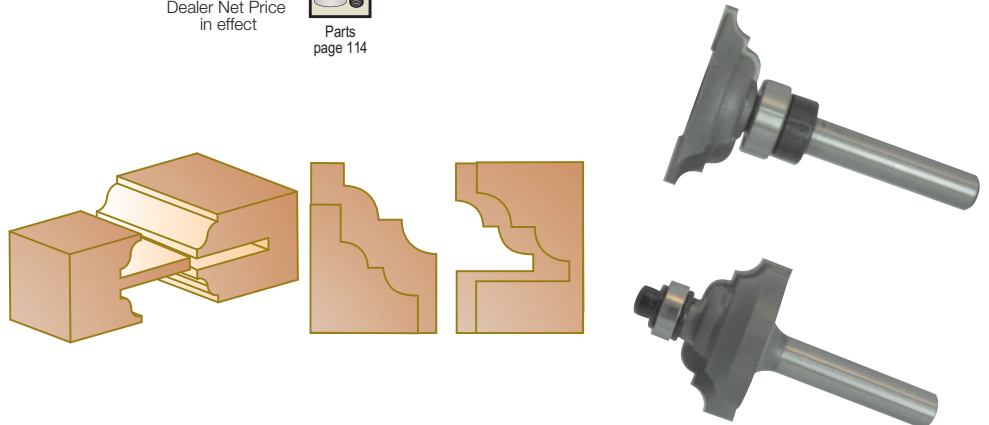
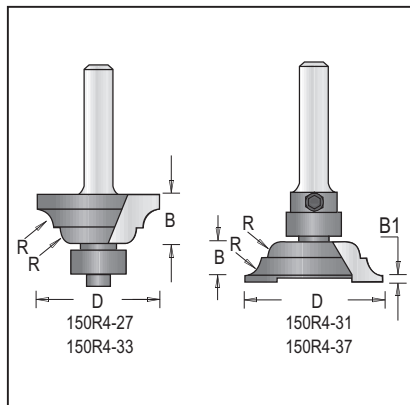


Tool no.	D	Shank	B	R	Length
150R4-20	13/16"	1/4"	1/2"	1/8"	1 5/8"
150R4-25	1"	1/4"	1/2"	1/8"	1 5/8"
150R4-26	1"	1/4"	21/32"	5/32"	1 25/32"
150R4-29	1 1/8"	1/4"	21/32"	5/32"	1 25/32"

Rail & Stile /Cope and Stick, 2 Flutes

 Dealer Net Price in effect

 Parts page 114



Tool no.	D	Shank	B	B1	R	Length	Parts
150R4-27	15/64"	1/4"	3/8"		9/64"	2"	B
150R4-31	1 13/64"	1/4"	23/64"	5/64"	9/64"	2"	F
150R4-33	1 5/16"	1/4"	5/8"		1 1/64"	2"	B
150R4-37	1 7/16"	1/4"	15/32"	1/8"	1 1/64"	2"	F



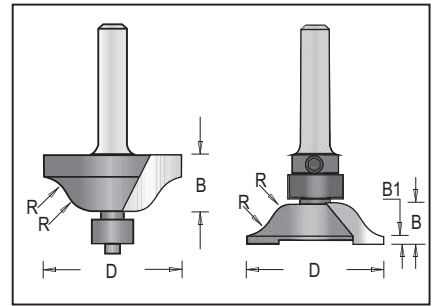
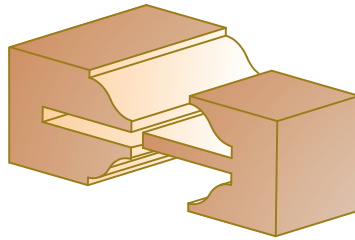
Rail & Stile/Coped Stick Bits 2 Flutes



Dealer Net Price
in effect



Parts
page 114



Tool no.	D	Shank	B	B1	R	Length	Parts
150R4-34	1 5/16"	1/4"	35/64"		21/64"	2 3/64"	B
150R4-36	1 7/16"	1/4"	25/64"	5/64"	21/64"	2"	F
150R4-38	1 15/32"	1/4"	35/64"		21/64"	2 3/64"	B
150R4-41	1 39/64"	1/4"	7/16"	1/8"	21/64"	2"	F

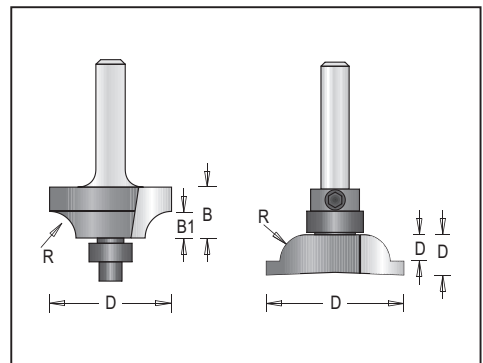
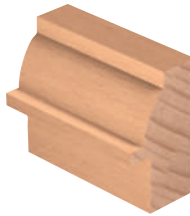
Rail & Stile/Coped Stick Bits 2 Flutes



Dealer Net Price
in effect



Parts
page 114



Tool no.	D	Shank	B	B1	R	Length	Parts
150R4-28	1 5/64"	1/4"	29/64"	15/64"	15/64"	1 31/32"	B
150R4-30	1 13/64"	1/4"	23/64"	15/64"	15/64"	1 57/64"	F

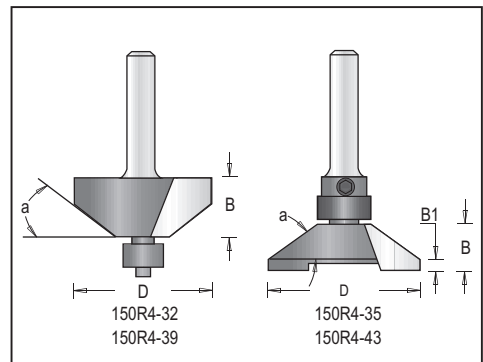
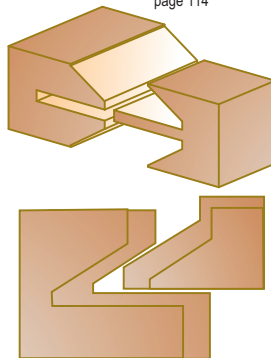
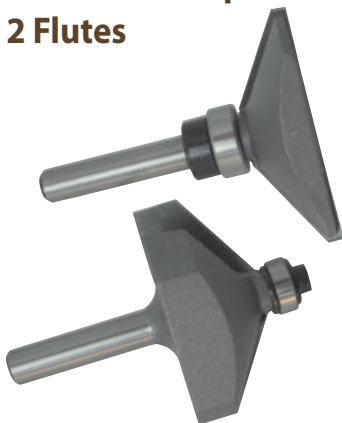
Rail & Stile/Coped Stick Bits 2 Flutes



Dealer Net Price
in effect



Parts
page 114



Tool no.	D	Shank	B	B1	a	Length	Parts
150R4-32	1 5/64"	1/4"	35/64"		33°	2 11/64"	B
150R4-35	1 7/16"	1/4"	25/64"	5/64"	33°	1 31/32"	F
150R4-39	1 9/16"	1/4"	43/64"		32°	2 11/64"	B
150R4-43	1 11/16"	1/4"	1/2"	1/8"	32°	1 31/32"	F



Rail & Stile - Raised Panel Door Set, 3 Pcs



Category

Premium industrial quality, suitable for working in natural woods and man made materials (MDF). Unique cutting angles and chip limiter body ensures safe, clean and easy routing operation. Produce beautiful raised panel doors with this 3 piece combination set of two Rail & Stile bits and one raised panel bit. The two Rail & Stile bits produce perfect fitting door frames and do not need adjustment or set up. Used with 3/4" to 1" thick wood. Attractive aluminum case will keep your bits safe and clean.

Tool no.
242R-167A

242R-167A consists of the following router bits:
126R8-67 Ogee Fillet Raised Panel
242R-1 2 piece Rail & Stile

Ogee Fillet Raised Panel

Tool no.	D	Shank	B	R	Length	Parts
126R8-67	2 5/8"	1/2"	11/16"	3/4"	2 9/16"	D

2 piece Rail & Stile

Tool no.	D	Shank	B	Length
242R-1	1 5/8"	1/2"	1/4"	3 1/8"

*Complete Set in Aluminum Case



Rail & Stile - Raised Panel Door Set, 3 Pcs



Category

Tool no.
242R-184A

242R-184A consists of the following router bits:
126R8-84 Ogee Fillet Raised Panel
242R-1 2 piece Rail & Stile

Ogee Fillet Raised Panel

Tool no.	D	Shank	B	R	Length	Parts
126R8-84	3 3/8"	1/2"	5/8"	7/8"	2 1/2"	D

2 piece Rail & Stile

Tool no.	D	Shank	B	Length
242R-1	1 5/8"	1/2"	1/4"	3 1/8"

*Complete Set in Aluminum Case



Rail & Stile - Raised Panel Door Set, 3 Pcs



Category

Tool no.
242R-286A

242R-286A consists of the following router bits:
126R8-86 Cove Raised Panel
242R-2 2 piece Rail & Stile

Cove Raised Panel

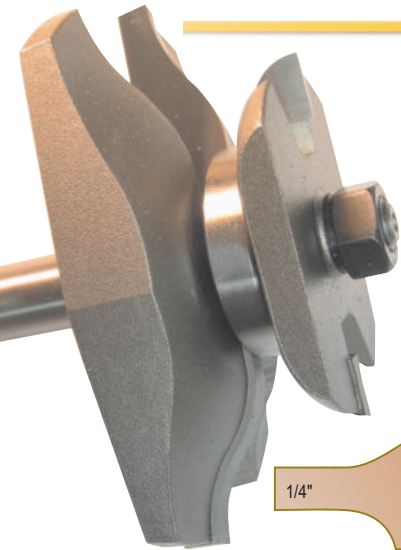
Tool no.	D	Shank	B	R	Length	Parts
126R8-86	3 3/8"	1/2"	1/2"	1 9/16"	2 3/8"	D

2 piece Rail & Stile

Tool no.	D	Shank	B	Length
242R-2	1 5/8"	1/2"	1/4"	3 3/8"

*Complete Set in Aluminum Case





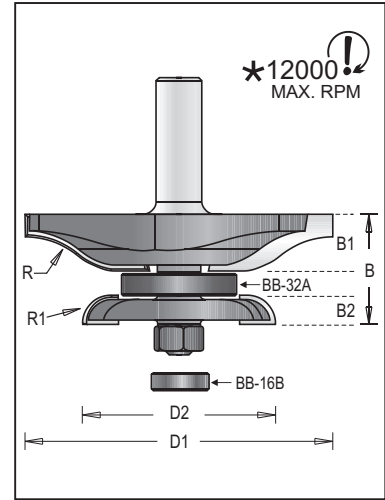
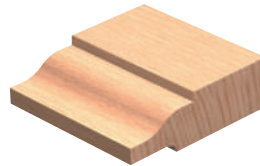
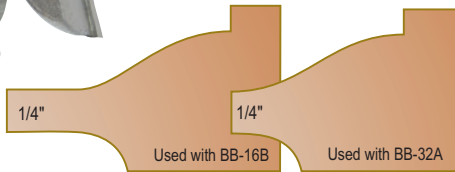
Ogee Fillet Raised Panel with Back Cutter, 2 Flutes



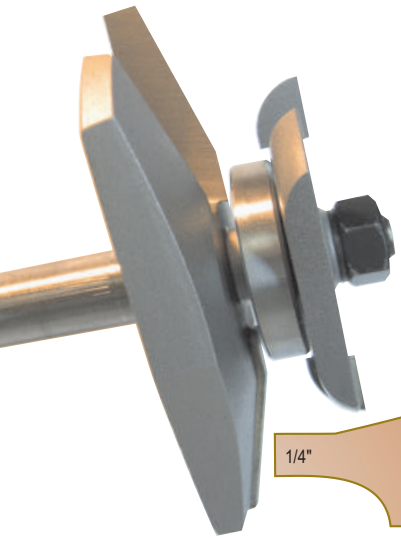
Tool no.	D1	D2	Shank	B	B1	B2	R	R1	Length
126R8-84BC3	3/8"	2 1/8"	1/2"	1 3/16"	5/8"	5/16"	7/8"	5/16"	3 1/16"

Complete Set Includes:

Raised Panel Bit 1225128; Back Cutter 1225010; Ball Bearing BB-16B (16x8x5mm); Ball Bearing BB-32A (1 1/4"x8mmx5mm); Washer 1920180 (12x8x1mm); Shim 1921150 (12x8x0.1mm - 2 pieces); Shim 1921200 (12x8x0.2mm - 2 pieces); Shim 1920135 (12x8x0.5mm - 2 pieces); Nut NF5/16 108R-N



ROUTING
CARBIDE TIPPED



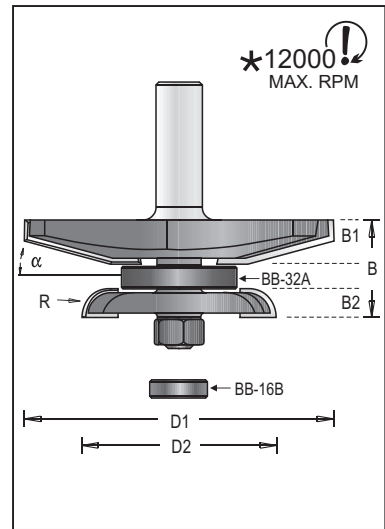
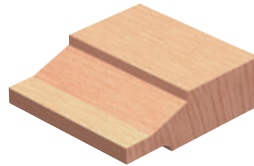
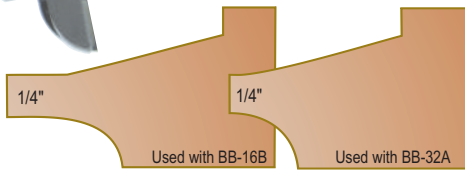
Provincial Raised Panel with Back Cutter, 2 Flutes



Tool no.	D1	D2	Shank	B	B1	B2	α	R	Length
126R8-85BC3	3/8"	2 1/8"	1/2"	1 1/16"	1/2"	5/16"	15°	5/16"	2 15/16"

Complete Set Includes:

Raised Panel Bit 1225048; Back Cutter 1225010; Ball Bearing BB-16B (16x8x5mm); Ball Bearing BB-32A (1 1/4"x8mmx5mm); Washer 1920180 (12x8x1mm); Shim 1921150 (12x8x0.1mm - 2 pieces); Shim 1921200 (12x8x0.2mm - 2 pieces); Shim 1920135 (12x8x0.5mm - 2 pieces); Nut NF5/16 108R-N



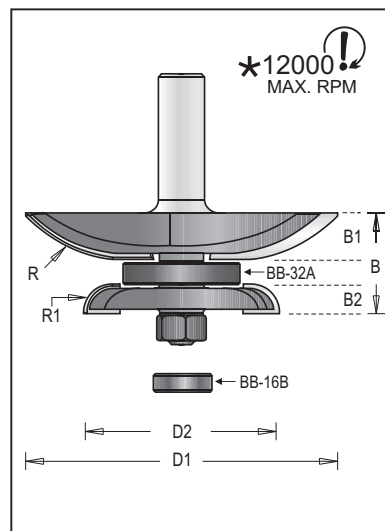
Cove Raised Panel with Back Cutter, 2 Flutes

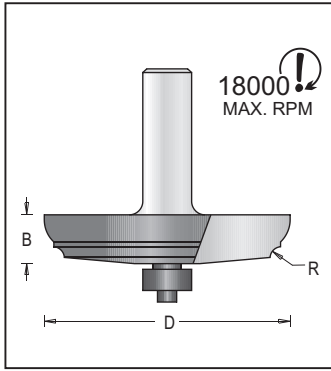


Tool no.	D1	D2	Shank	B	B1	B2	R	R1	Length
126R8-86BC3	3/8"	2 1/8"	1/2"	1 1/16"	1/2"	5/16"	1 9/16"	5/16"	2 15/16"

Complete Set Includes:

Raised Panel Bit 1225078; Back Cutter 1225010; Ball Bearing BB-16B (16x8x5mm); Ball Bearing BB-32A (1 1/4"x8mmx5mm); Washer 1920180 (12x8x1mm); Shim 1921150 (12x8x0.1mm - 2 pieces); Shim 1921200 (12x8x0.2mm - 2 pieces); Shim 1920135 (12x8x0.5mm - 2 pieces); Nut NF5/16 108R-N





Classical Raised Panel, 2 Flutes



Category



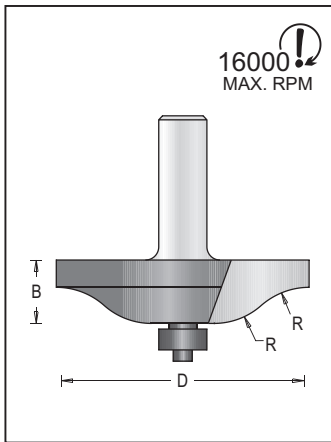
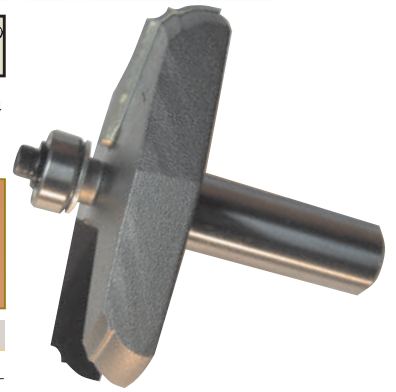
Flat Screw



Parts
page 114



Tool no.	D	Shank	B	R	Length	Parts
126R8-63	2 1/2"	1/2"	1/2"	1/8"	2 3/8"	D



Ogee Fillet Raised Panel, 2 Flutes



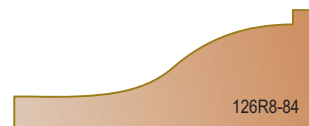
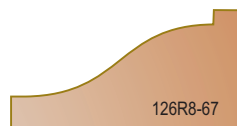
Category



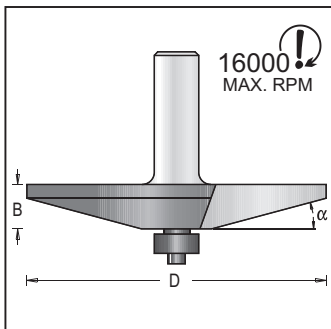
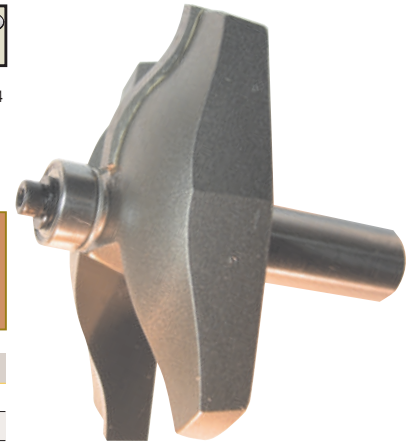
Flat Screw



Parts
page 114



Tool no.	D	Shank	B	R	Length	Parts
126R8-67	2 5/8"	1/2"	1 1/16"	3/4"	2 9/16"	D
126R8-84	3 3/8"	1/2"	5/8"	7/8"	2 1/2"	D



Provincial Raised Panel, 2 Flutes



Category



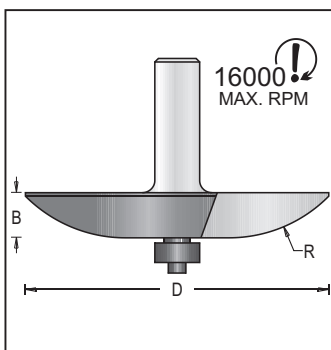
Flat Screw



Parts
page 114



Tool no.	D	Shank	B	α	Length	Parts
126R8-85	3 3/8"	1/2"	1/2"	15°	2 3/8"	D



Cove Raised Panel, 2 Flutes



Category



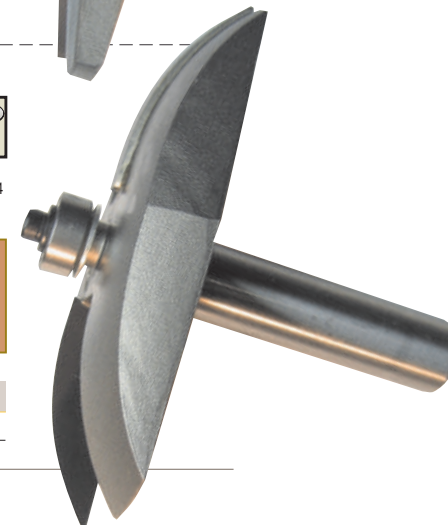
Flat Screw



Parts
page 114

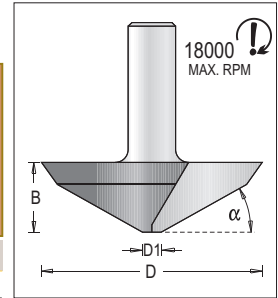
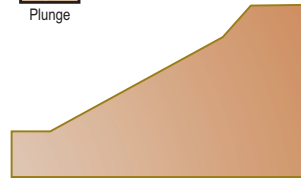


Tool no.	D	Shank	B	R	Length	Parts
126R8-86	3 3/8"	1/2"	1/2"	1 9/16"	2 3/8"	D



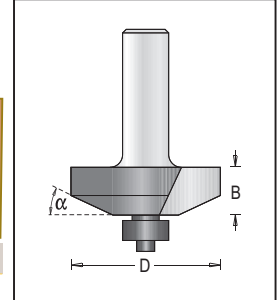
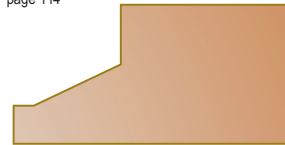
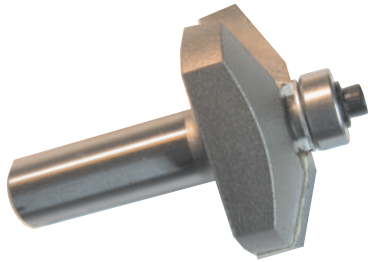
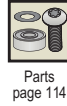


Raised Panel Bit, French Provincial, Plunge Type, 2 Flutes



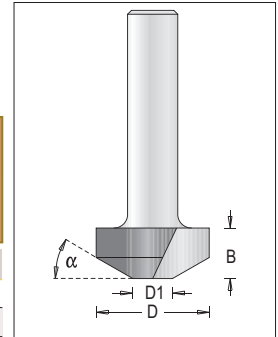
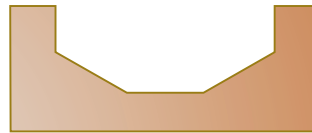
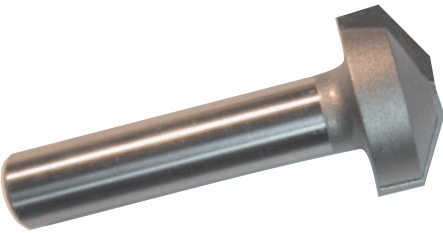
Tool no.	D	D1	Shank	B	α	Length
122R8-67	2 3/4"	6mm	1/2"	3/4"	25°	2 1/4"

Raised Panel Bit with Ball Bearing Guide, 2 Flutes



Tool no.	D	Shank	B	α	Length	Parts
123R8-41	1 5/8"	1/2"	1/2"	25°	2 1/2"	D

Bevel Panel Raiser

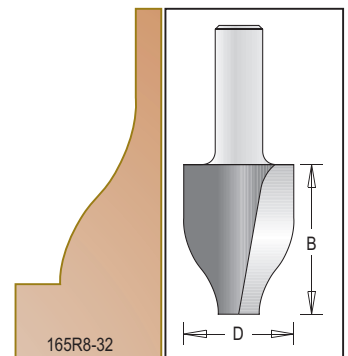
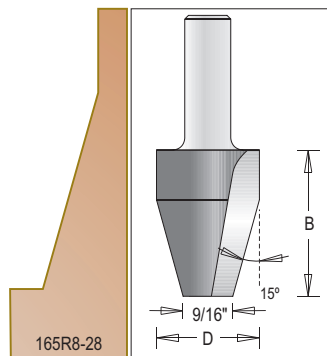
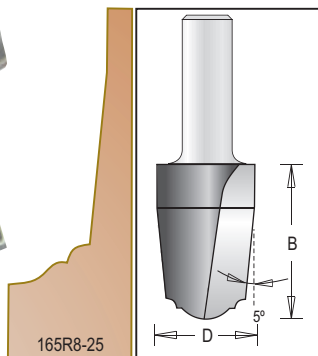
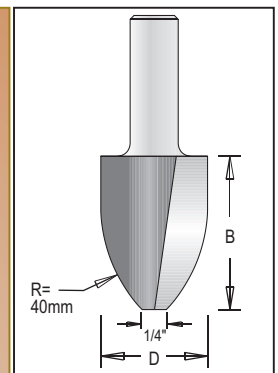


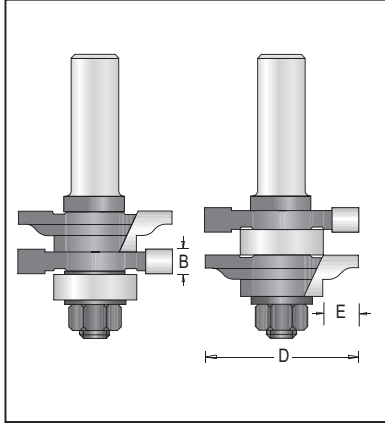
Tool no.	D	D1	Shank	α	B	Length
122R8-28	1 1/8"	10mm	1/2"	30°	1/2"	2 3/4"
122R8-50	2"	16mm	1/2"	10°	5/8"	2 3/16"

Vertical Raised Panel Bits, 2 Flutes



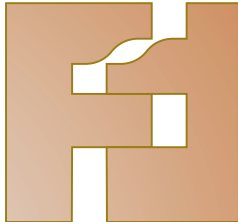
Tool no.	D	Shank	B	Length
165R8-25	1"	1/2"	1 1/2"	2 7/8"
165R8-28	1 1/8"	1/2"	1 1/2"	2 7/8"
165R8-29	1 1/8"	1/2"	1 1/2"	2 7/8"
165R8-32	1 3/16"	1/2"	1 1/2"	2 7/8"





Rail & Stile Bits, Reversible, 1 Piece, 2 Flutes

Dealer Net Price in effect

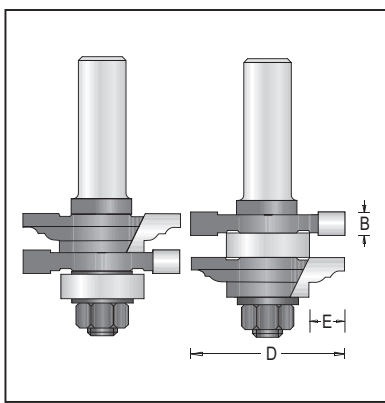
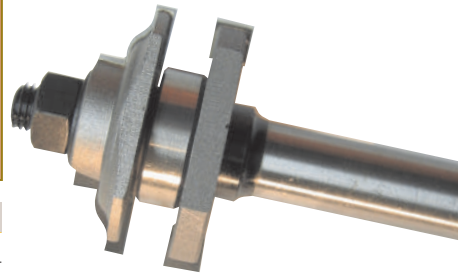


1 piece set!

For 3/4" to 7/8" material

Tool no.	D	Shank	B	E	Length
142R8-40-1	1 5/8"	1/2"	1/4"	3/8"	3"

Replacement Parts:
 Profile Cutter: 1431010
 Ball Bearing: BB-22 Groover: 1431040 Spacer 0.1mm: 1921000
 Arbor & Nut: 1900048 Washer: 1920110 Spacer 0.05mm: 1920500



Rail & Stile Bits, Reversible, 1 Piece, 2 Flutes

Dealer Net Price in effect

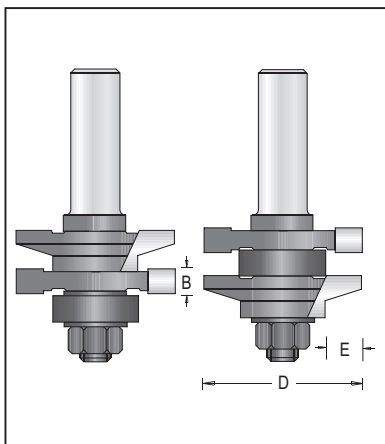
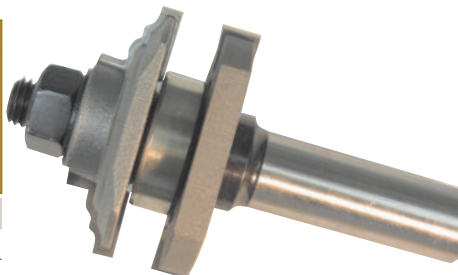


1 piece set!

For 3/4" to 7/8" material

Tool no.	D	Shank	B	E	Length
142R8-40-2	1 5/8"	1/2"	1/4"	3/8"	3"

Replacement Parts:
 Profile Cutter: 1431010
 Ball Bearing: BB-22 Groover: 1431040 Spacer 0.1mm: 1921000
 Arbor & Nut: 1900048 Washer: 1920110 Spacer 0.05mm: 1920500



Rail & Stile Bits, Reversible, 1 Piece, 2 Flutes

Dealer Net Price in effect

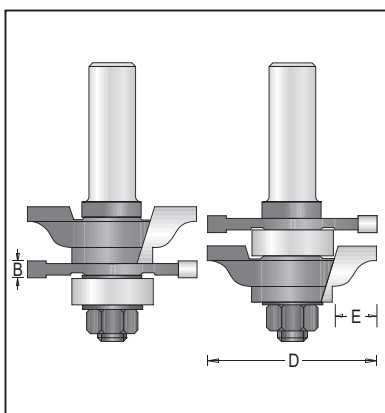
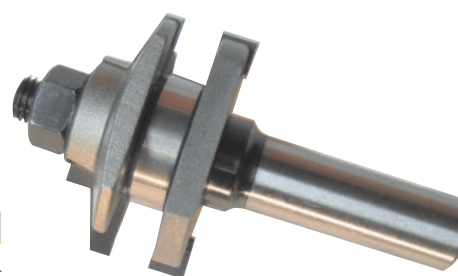


1 piece set!

For 3/4" to 7/8" material

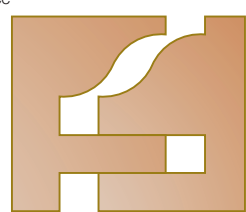
Tool no.	D	Shank	B	E	Length
142R8-40-3	1 5/8"	1/2"	1/4"	3/8"	3"

Replacement Parts:
 Profile Cutter: 1431010
 Ball Bearing: BB-22 Groover: 1431040 Spacer 0.1mm: 1921000
 Arbor & Nut: 1900048 Washer: 1920110 Spacer 0.05mm: 1920500



Rail & Stile Bits, Reversible, 1 Piece, 2 Flutes

Dealer Net Price in effect

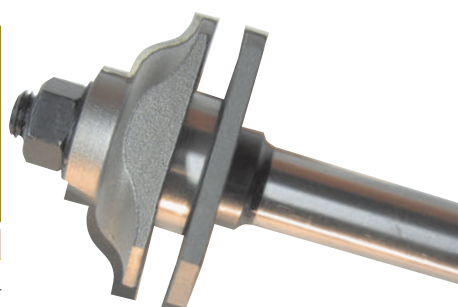


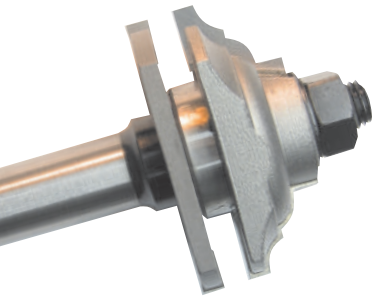
1 piece set!

For 3/4" to 7/8" material

Tool no.	D	Shank	B	E	Length
142R8-45-1	1 13/16"	1/2"	5/32"	1/2"	3"

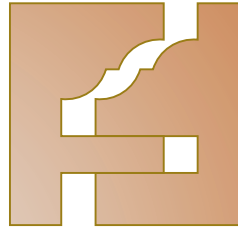
Replacement Parts:
 Profile Cutter: 1431010
 Ball Bearing: BB-22 Groover: 1431040 Spacer 0.1mm: 1921000
 Arbor & Nut: 1900048 Washer: 1920110 Spacer 0.05mm: 1920500





Rail & Stile Bits, Reversible, 1 Piece, 2 Flutes

 Dealer Net Price
in effect



1 piece set!

For 3/4" to 7/8" material

Tool no.	D	Shank	B	E	Length
142R8-45-2	1 13/16"	1/2"	5/32"	1/2"	3"

Replacement Parts:

Profile Cutter: 1431010

Ball Bearing: BB-22

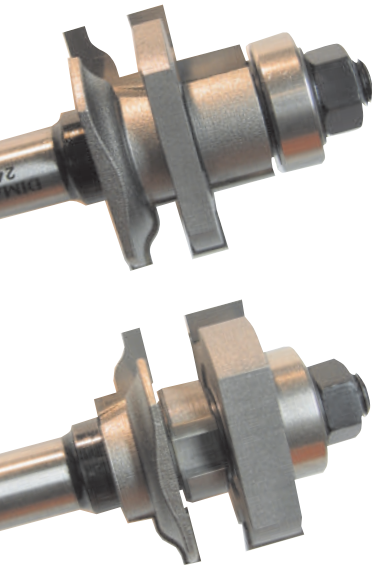
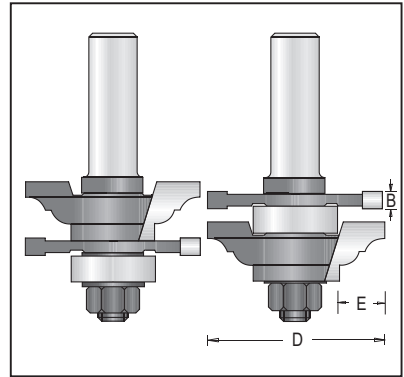
Arbor & Nut: 1900048

Groover: 1431040

Washer: 1920110

Spacer 0.1mm: 1921000

Spacer 0.05mm: 1920500



Rail & Stile Bits, 2 Piece Sets, 2 Flutes

 Dealer Net Price
in effect



These sets are assembled with an extra (7/8") flush cutter for un-planed surfaces. The ball bearing at the end of the arbor is for use with an outside guide.

2 piece set!

For 3/4" to 1" material

Tool no.	D	Shank	B	Length
242R8-40-1	1 5/8"	1/2"	1/4"	3 5/16"

Replacement Parts for 242R8-40-1,

as shown on left side:

Profile Cutter:

Cutter (7/8" Dia.): 1431010L

Cutter (7/8" Dia.): 1450120

Cutter (1 5/8" Dia.): 1431060

Arbor & Nut: 1900138

Ball Bearing: BB-22

Replacement Parts for 242R8-40-1,

as shown on right side:

Profile Cutter:

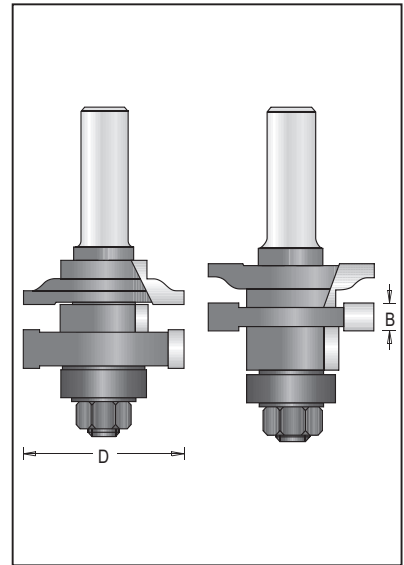
Groover (1/4" thick): 1431010

Cutter (7/8" Dia.): 1431040

Cutter (7/8" Dia.): 1450220

Arbor & Nut: 1900138

Ball Bearing: BB-22



Rail & Stile Bits, 2 Piece Sets, 2 Flutes

 Dealer Net Price
in effect



These sets are assembled with an extra (7/8") flush cutter for un-planed surfaces. The ball bearing at the end of the arbor is for use with an outside guide.

2 piece set!

For 3/4" to 1" material

Tool no.	D	Shank	B	Length
242R8-40-2	1 5/8"	1/2"	1/4"	3 5/16"

Replacement Parts for 242R8-40-2,

as shown on left side:

Profile Cutter:

Cutter (7/8" Dia.): 1450230

Cutter (7/8" Dia.): 1450120

Cutter (1 5/8" Dia.): 1431060

Arbor & Nut: 1900138

Ball Bearing: BB-22

Replacement Parts for 242R8-40-2,

as shown on right side:

Profile Cutter:

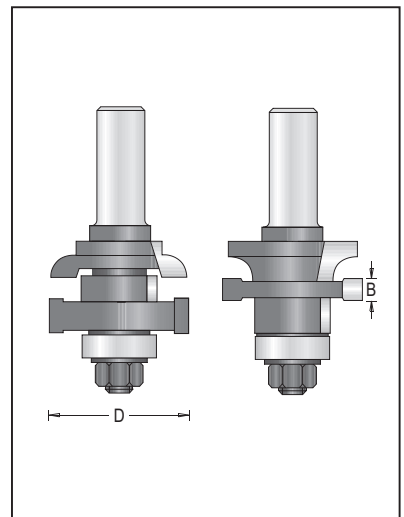
Groover (1/4" thick): 1450130

Cutter (7/8" Dia.): 1431040

Cutter (7/8" Dia.): 1450220

Arbor & Nut: 1900138

Ball Bearing: BB-22

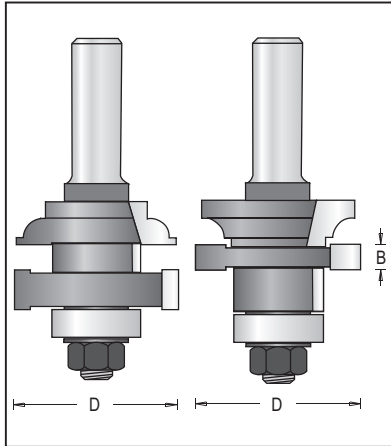




Rail & Stile Bits, 2 Piece Sets, 2 Flutes

Dealer Net Price in effect

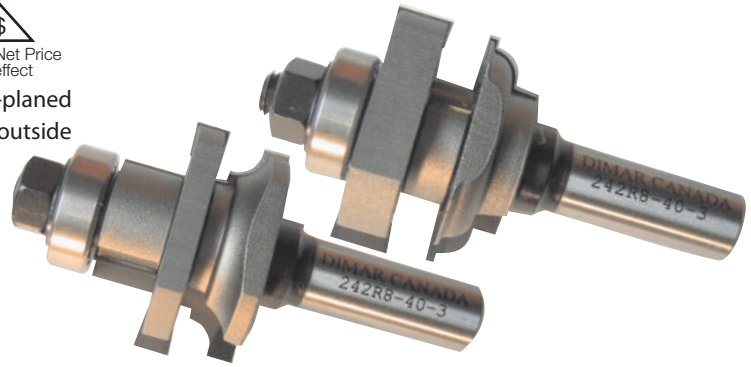
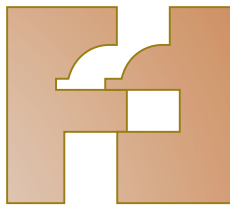
These sets are assembled with an extra (7/8") flush cutter for un-planed surfaces. The ball bearing at the end of the arbor is for use with an outside guide.



2 piece set!

For 3/4" to 1" material

Tool no.	D	Shank	B	Length
242R8-40-3	1 5/8"	1/2"	1/4"	3 5/16"



Replacement Parts for 242R8-40-3, as shown on left side:

Profile Cutter:	1450240
Cutter (7/8" Dia.):	1450120
Cutter (1 5/8" Dia.):	1431060
Arbor & Nut:	1900138
Ball Bearing:	BB-22

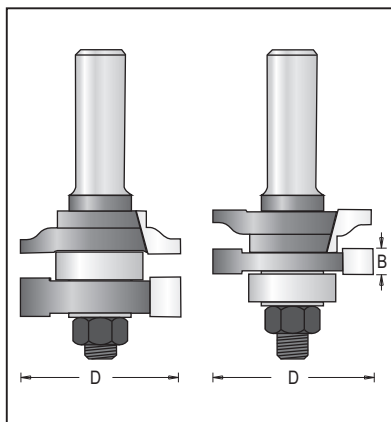
Replacement Parts for 242R8-40-3, as shown on right side:

Profile Cutter:	1450140
Groover (1/4" thick):	1431040
Cutter (7/8" Dia.):	1450220
Arbor & Nut:	1900138
Ball Bearing:	BB-22

Rail & Stile, 2 Piece Sets, 2 Flutes, in wooden box

Dealer Net Price in effect

Sets include TWO complete assemblies consisting of: cutters, arbors, bearings, etc. Easy to use, no assembly needed.

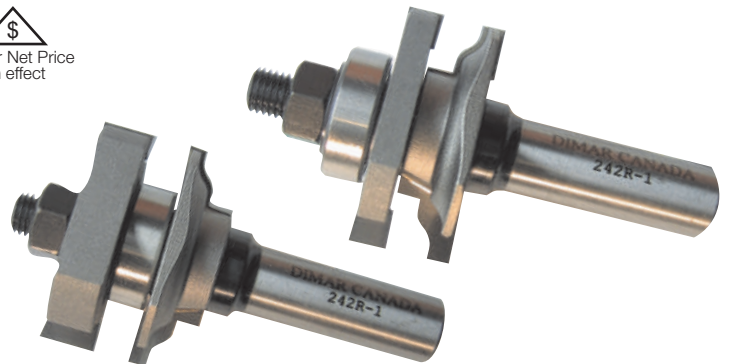


2 piece set!

For 3/4" to 1" material

Groove depth: 3/8"

Tool no.	D	Shank	B	Length
242R-1	1 5/8"	1/2"	1/4"	3 1/8"



Replacement Parts for 242R-1, as shown on left side:

Profile Cutter	1431010L
Cutter (1 5/8" Dia.)	1431060
Arbor & Nut	1900058
Ball Bearing	BB-22

Replacement Parts for 242R-1, as shown on right side:

Profile Cutter	1431010
Groover (1/4" thick)	1431040
Arbor & Nut	1900058
Ball Bearing	BB-22



Rail & Stile, 2 Piece Sets, 2 Flutes, in wooden box



Sets include TWO complete assemblies consisting of: Cutters, arbors, bearings, etc. Easy to use, no assembly needed.

2 piece set!

For 3/4" to 1" material

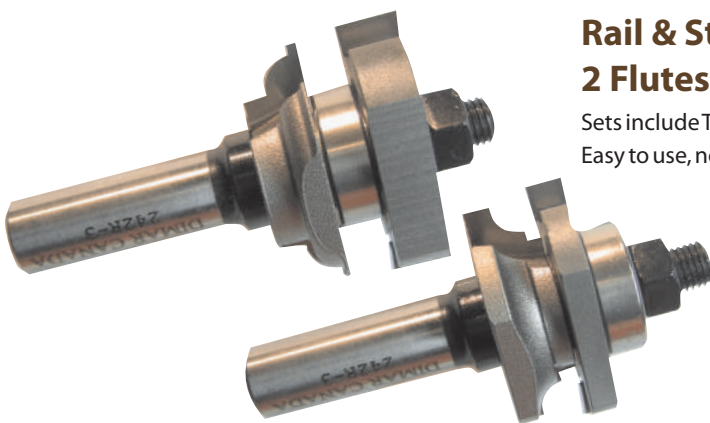
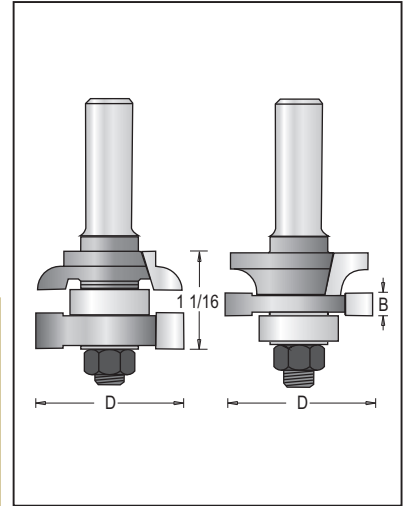
Tool no.	D	Shank	B	Length
242R-2	1 5/8"	1/2"	1/4"	3 1/8"

Replacement Parts for 242R-2, as shown on left side:

Profile Cutter	1450230
Cutter (1 5/8" Dia.)	1431060
Arbor & Nut	1900058
Ball Bearing	BB-22

Replacement Parts for 242R-2, as shown on right side:

Profile Cutter	1450130
Groover (1/4" thick)	1431040
Arbor & Nut	1900058
Ball Bearing	BB-22



Rail & Stile Bits, 2 Piece Sets, 2 Flutes



Sets include TWO complete assemblies consisting of: cutters, arbors, bearings, etc. Easy to use, no assembly needed.

2 piece set!

For 3/4" to 1" material

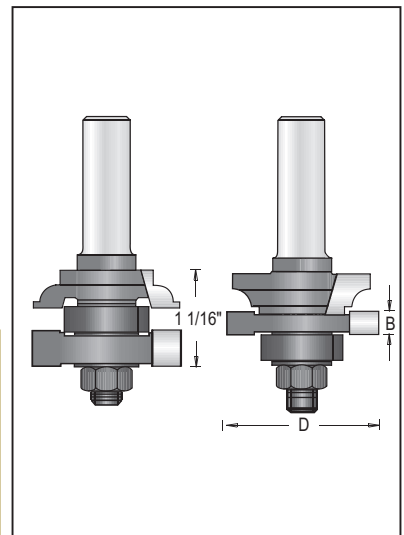
Tool no.	D	Shank	B	Length
242R-3	1 5/8"	1/2"	1/4"	3 1/8"

Replacement Parts for 242R-3, as shown on left side:

Profile Cutter	1450240
Cutter (1 5/8" Dia.)	1431060
Arbor & Nut	1900058
Ball Bearing	BB-22

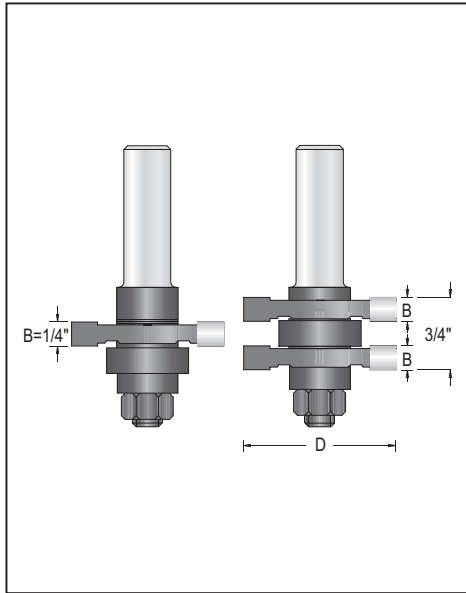
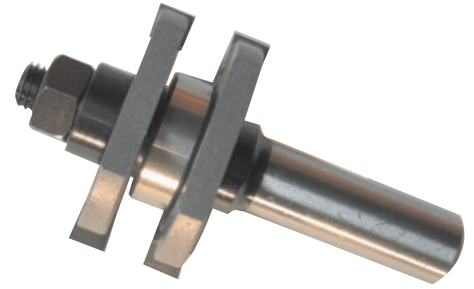
Replacement Parts for 242R-3, as shown on right side:

Profile Cutter	1450140
Groover (1/4" thick)	1431040
Arbor & Nut	1900058
Ball Bearing	BB-22





Tongue And Groove Cutter, 1 Piece, Reversible, 2 Flutes



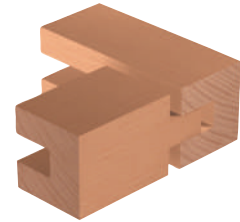
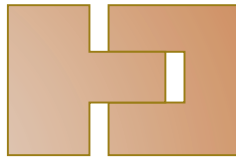
1 piece set!

For 5/8" to 3/4" material

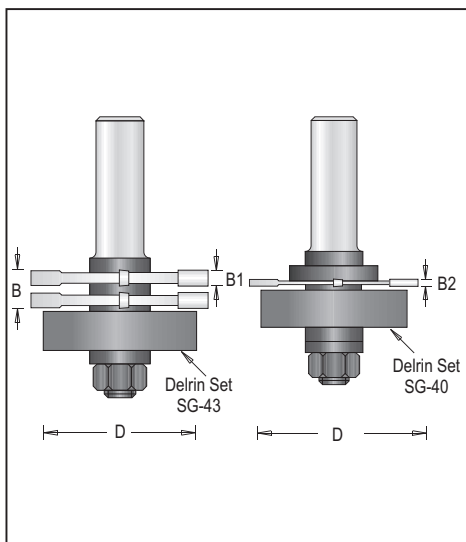
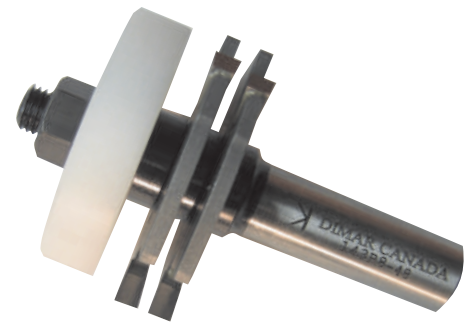
Tool no.	D	Shank	B	Length
143R8-40	1 5/8"	1/2"	1/4"	3"

Replacement Parts:

Groover 1/4" (2 pc.):	1431040			
Arbor & Nut (1 pc.):	1900048	Shims 0.1mm (4 pc.):	1921000	
Ball Bearing (1 pc.):	BB-22	Shims 0.5mm (2 pc.):	1920130	
Washer 1.0mm (1 pc.):	1920110	Spacer 6.0mm (2 pc.):	1920160	



Tongue and Groove -Joint Set, 3 Flutes



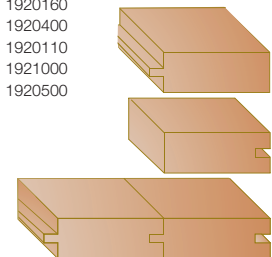
1 piece set!

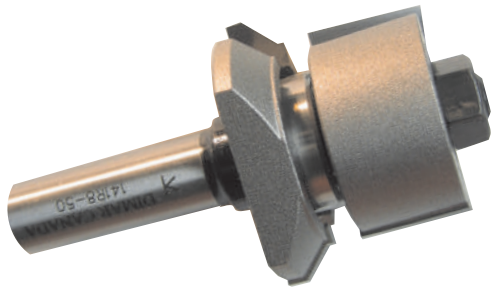
For 5/16" to 3/8" material

Tool no.	D	Shank	B1	B2	B	Length
143R8-48	1 7/8"	1/2"	5/32"	5/64"	3/8"	3"

Complete set includes:

Arbor and nut (1 piece):	1900048	Shim 6mm (1 piece):	1920160
Groover 5/32" (2 pieces):	108R3-4	Shim 3.15mm (1 piece):	1920400
Groover 5/64" (1 piece):	108R3-2	Shim 1mm (2 pieces):	1920110
Super-Guide Bearing:	SG-40	Shim 0.1mm (1 piece):	1921000
Super-Guide Bearing:	SG-43	Shim 0.05mm (1 piece):	1920500





"V" Panel Bit Set, 2 Flutes

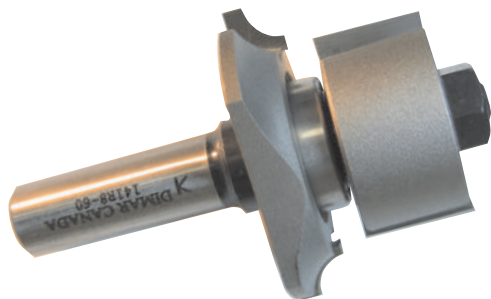
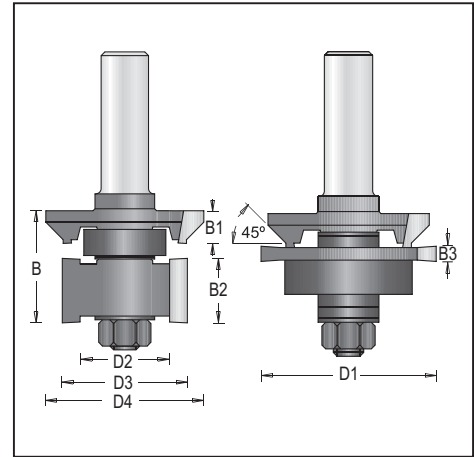
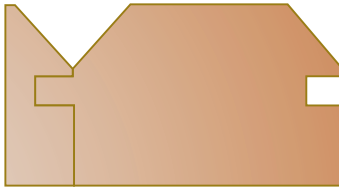


ROUTING
CARBIDE TIPPED

1 piece set!

Tool no.	D2	D1	D3	D4	Shank	B1	B2	B3	B	Length
141R8-50	7/8"	1 13/16"	1 5/16"	1 21/32"	1/2"	11/32"	11/16"	5/32"	1 3/16"	3"

- Replacement Parts:
- Profile Cutter: (B1) 1681010
 - Rabbeting Cutter: (B2) 1680010
 - Groover: (B3) 1421040
 - Arbor & Nut: 1900058
 - Ball Bearing: BB-22 Shims 0.5mm 1920130
 - Ball Bearing: BB-33 Shims 0.4mm 1920120
 - Spacer 3.0mm (x3) 1920150 Shims 0.1mm (x3) 1921000
 - Spacer 1.0mm (x2) 1920110 Shims 0.05mm 1920500



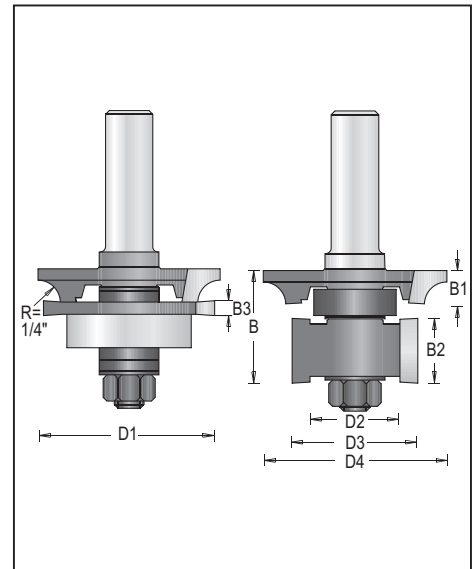
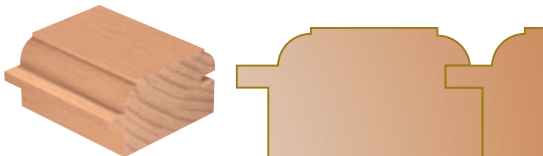
"C" Panel Bit Set, 2 Flutes



1 piece set!

Tool no.	D1	D2	D3	D4	Shank	B1	B2	B3	B	Length
141R8-60	1 13/16"	7/8"	1 5/16"	1 7/8"	1/2"	11/32"	11/16"	5/32"	1 3/16"	3"

- Replacement Parts:
- Profile Cutter: (B1) 1682010
 - Rabbeting Cutter: (B2) 1680010
 - Groover: (B3) 1421040
 - Arbor & Nut: 1900058
 - Ball Bearing: BB-22 Shims 0.5mm 1920130
 - Ball Bearing: BB-33 Shims 0.4mm 1920120
 - Spacer 3.0mm (x3) 1920150 Shims 0.1mm (x3) 1921000
 - Spacer 1.0mm (x2) 1920110 Shims 0.05mm 1920500





Carbide Tipped Double Edge Folding V Groove, 90°



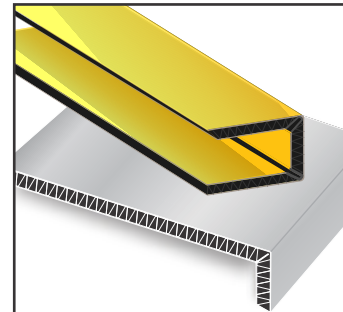
Category

Double Edge Folding 'V' Groove Router Bits for Shaping Aluminum Composite Material (ACM) Panels.

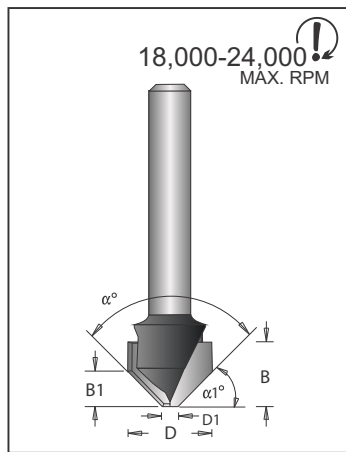
These bits are widely used as cladding for many diverse applications such as office buildings, hospitals, convention centers, airports, hotels. Routing V-shaped grooves, whereby the aluminum cover and a part of the polyethylene core is removed, allows folding/creasing the remaining material by hand.

Designed for cutting and scoring aluminum sandwich materials including:

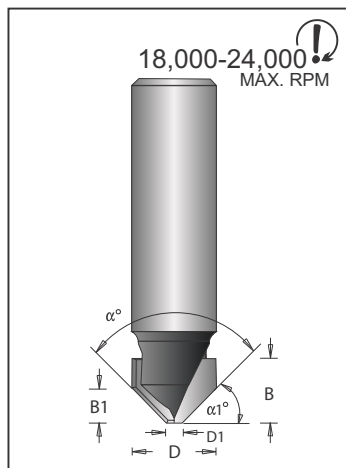
- Aluminum, Clay, Zinc & Wood Composite Panels
- Aluminum Composite Materials (ACM)
- Aluminum Composite Panel (ACP)*
- ALPOLIC® Copper Composite Material (CCM)
- Alucobond®
- Alupanel®
- Dibond®
- Durabond**
- e-panel™
- Etalbond®
- Phenolics
- Plastic/Acrylic
- Plexiglas®
- Titanium Composite



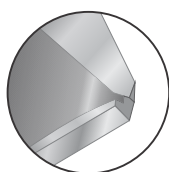
Aluminum Composite Materials (ACM)
Alucobond®, Dibond® and similar



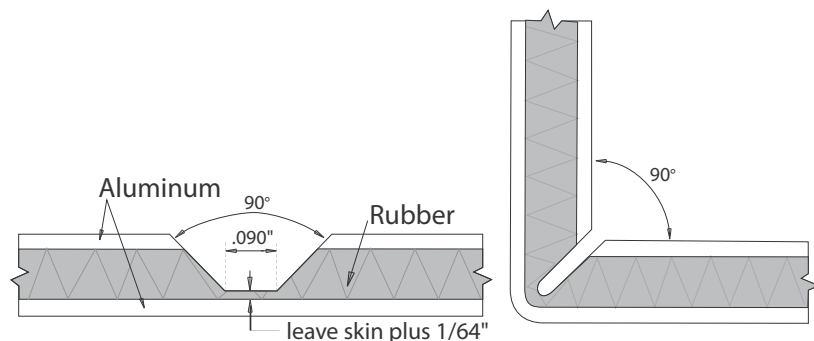
Tool no.	D	D1	B	B1	α	α1	Shank	Length
105R412AL	1/2"	3/32"	3/8"	13/64"	90°	45°	1/4"	2"



Tool no.	D	D1	B	B1	α	α1	Shank	Length
105R812AL	1/2"	3/32"	3/8"	13/64"	90°	45°	1/2"	2"

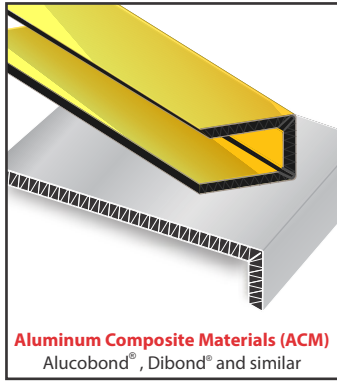


"V" Groove





Carbide Tipped Double Edge Folding V Groove, 108°



Aluminum Composite Materials (ACM)
Alucobond®, Dibond® and similar

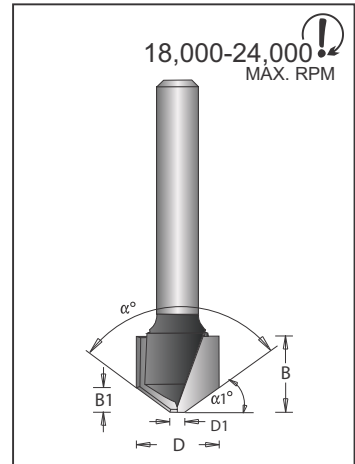
Specially designed router bits are used to route V-grooves in the above materials to allow easy bending without cracking the bent area. Route within 0.8mm from the bottom of the composite panel to achieve a clean bend/radius.

Routing V-shaped grooves, whereby the aluminum cover and a part of the polyethylene core is removed, allows folding the remaining material by hand. Ideal for wall panel fabrication.

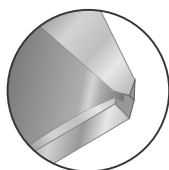
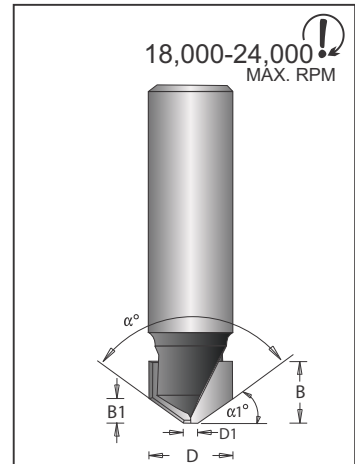
- Industrial quality, carbide tipped
- For use on routers and CNC machines
- ACM panels may be used both indoors and outdoors



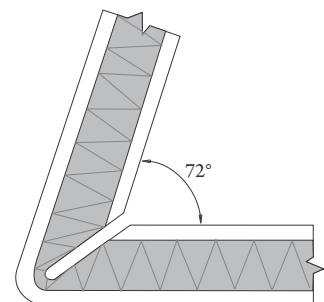
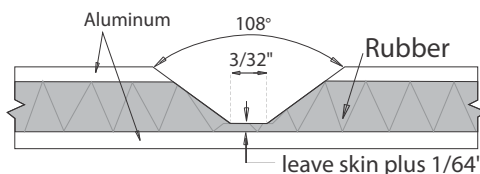
Tool no.	D	D1	B	B1	α	Shank	$\alpha 1$	Length
105R412BAL	1/2"	3/32"	29/64"	5/32"	108°	1/4"	36°	2"



Tool no.	D	D1	B	B1	α	$\alpha 1$	Shank	Length
105R812BAL	1/2"	3/32"	3/8"	5/32"	108°	36°	1/2"	2 3/64"

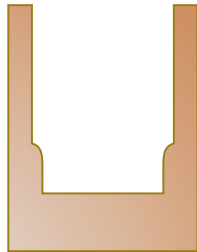
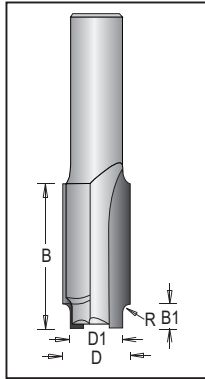


"V" Groove



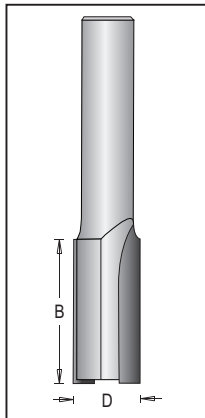


Stepped Rabbeting Bit, 2 Flutes



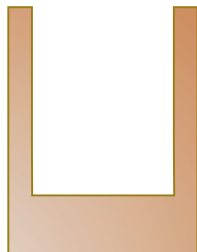
Tool no.	D	D1	Shank	B	B1	R	Length
107RBS8-16.3	5/8"	1/2"	1/2"	35mm	6mm	1.8mm	3"

Door/High Production Straight Plunge Bits, 2 Flutes



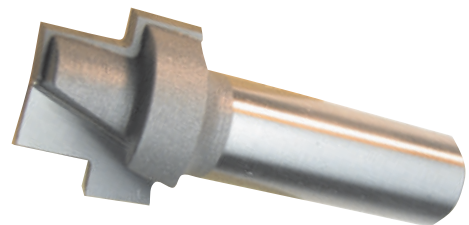
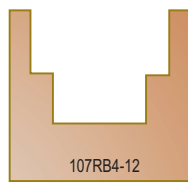
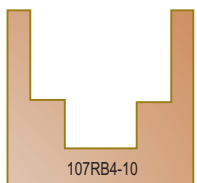
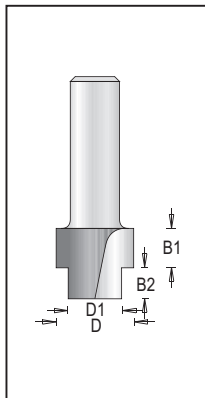
Excellent for Cutting:

- Wood
- MDF
- Plywood



Tool no.	D	Shank	B	Length
107RB8-16.3	5/8"	1/2"	35mm	5 1/2"
107RLSW8-12SP	1/2"	1/2"	2 1/4"	5 1/2"
107RX8-12SP	1/2"	1/2"	2 1/2"	5 1/2"
107RY8-12SP	1/2"	1/2"	3"	5 1/2"

Stepped Rabbeting Bits, 2 Flutes

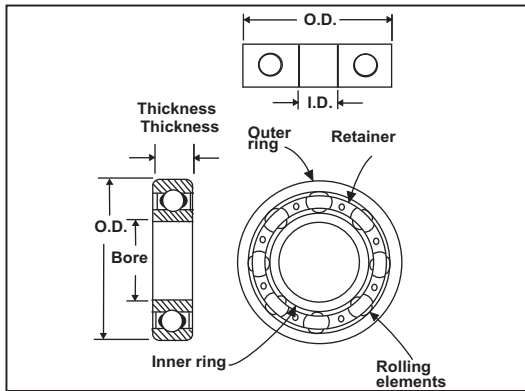


Tool no.	D1	D	Shank	B1	B2	Length
107RB4-10	3/8"	3/4"	1/4"	1/2"	1/4"	1 7/8"
107RB4-12	1/2"	3/4"	1/4"	3/8"	1/4"	2"



Ball Bearing

Ball Bearings are one of the most important components in a Router Bit's structure since they have a direct impact on design and performance. Dimar's Deep Groove Ball Bearings have shields installed on both sides and are factory-packed with lubricants. It eliminates the need for relubrication and therefore, reduces maintenance costs. Dimar's selected quality ball bearings have been designed to operate at rotating speeds well above the speeds of the Router Machines on the market.



*Special ball bearing replaces the standard 1/2" ball bearing in Flush Trim Bits that have been sharpened a few times. Prolongs tool service.

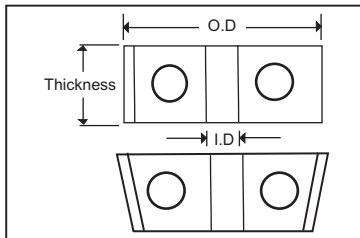
Tool no.	O.D. Outside Diameter	I.D. Inside Diameter	Thickness
BB-6	1/4"	1/8"	7/64"
BB-8M	8mm	3mm	4mm
BB-9M	9mm	5mm	3mm
BB-10A	3/8"	1/8"	5/32"
BB-10	3/8"	3/16"	1/8"
*BB-11	0.488"	3/16"	5mm
BB-12	1/2"	3/16"	5mm
BB-12A	1/2"	1/4"	3/16"
BB-12B	1/2"	1/8"	11/64"
BB-14A	14mm	8mm	4mm
BB-14M	14mm	7mm	5mm
BB-16	5/8"	1/4"	5mm
BB-16A	5/8"	3/16"	5mm
BB-16B	16mm	8mm	5mm
BB-16M	16mm	5mm	5mm
BB-19	3/4"	1/4"	9/32"
BB-19A	3/4"	3/16"	5mm
BB-19B	3/4"	1/2"	5/32"
BB-19C	3/4"	3/16"	9/32"
BB-19M	19mm	6mm	6mm
BB-22	7/8" (22mm)	5/16" (8mm)	7mm
BB-22A	7/8"	3/16"	7mm
BB-22B	7/8"	1/4"	1/4"
BB-22M	22mm	7mm	7mm
BB-24M	24mm	8mm	5/16"
BB-26M	26mm	10mm	8mm
BB-26	1"	15mm	5.5mm
BB-26A	1"	1/4"	1/4"
BB-28	1 1/8"	1/2"	5/16"
BB-28A	1 1/8"	3/16"	6.6mm
BB-28B	1 1/8"	8mm	1/4"
BB-28M	28mm	5/16" (8mm)	9mm
BB-28MA	28mm	15mm	7mm
BB-28MS	28mm	8mm	7mm
BB-31	1 7/32"	5/16" (8mm)	8.6mm
BB-32	1 1/4"	15mm	8.5mm
BB-32A	1 1/4"	8mm	5mm
BB-32B	1 1/4"	1/4"	1/4"
BB-33	1 5/16" (33.5mm)	5/16" (8mm)	8.6mm
BB-35	1 3/8"	3/16"	6.6mm
BB-35M	35mm	15mm	11mm
BB-38	1 1/2"	15mm	8.5mm
BB-51	2"	15mm	12.5mm

ROUTING
CARBIDE TIPPED

Super-Guide Ball Bearing

Guide Assemblies

Dimar's Precision Ball Bearing are factory fitted with an exclusive non-marring DELRIN sleeve for unsurpassed performance designed especially for routing solid surface materials such as DuPont's Corian. These new Super-Guide bearing assemblies will guarantee not to leave marks on the material being cut.



Tool no.	O.D.	I.D.	Thickness	Taper
SG-12	1/2"	3/16"	5.0	0
SG-19	3/4"	1/4"	6.6	0
SG-22A	7/8"	1/4"	6.5	10 Degrees
SG-22B	7/8"	1/4"	6.7	5 Degrees
SG-22C	21.4mm	1/4"	1/4"	1/2" Radius
SG-22D	19.4mm	1/4"	1/4"	3/4" Radius
SG-22E	18.5mm	1/4"	1/4"	1" Radius
SG-25	25mm	1/4"	6.5	5 Degrees
SG-27	27mm	1/4"	7.0	0
SG-28	28mm	5/16" (8mm)	8.6	0
SG-28.5	1 1/8"	15mm	8.5	0
SG-29	29mm	5/16" (8mm)	8.6	0
SG-34	34mm	5/16" (8mm)	8.6	0
SG-40	40.8mm	5/16" (8mm)	10.6	0
SG-43	43mm	5/16" (8mm)	3/8"	0



Spacers - Flat



Tool no.	O.D.	I.D.	Thickness
1920500	5/8"	5/16"	0.05mm
1921000	5/8"	5/16"	0.1mm
1920130	5/8"	5/16"	0.5mm
1920110	5/8"	5/16"	1.0mm
1920150	5/8"	5/16"	3.0mm
1920180	12mm	8mm	1.0mm
1920200	16mm	5/16"	3.4mm
1920050	1/2"	1/4"	5.0mm
1920300	5/8"	5/16"	5.5mm
1920160	5/8"	5/16"	6.0mm
1920270	3/8"	1/4"	2.2mm



Raised Washers



Tool no.	O.D.	I.D.	Thickness
1920010	3/8"	1/8"	1.3mm
1920070	1/2"	3/16"	1.3mm
1920100	16mm	5mm	0.8mm



Lock Washers (Circlip)



Tool no.	O.D.	I.D.	Thickness
1960050	3/8"	9/32"	0.8mm
1960060	11/16"	1/2"	1.0mm



Flat/Spring Washers



Tool no.	O.D.	I.D.	Thickness
1920040	5/16"	3/16"	1.2mm
1920310	3/8"	1/4"	1.4mm
1950040	3/16"	7/64"	1/64"
1950010	1/4"	1/8"	1/64"
1950800	3/8"	3/16"	1.0mm



Keys



Tool no.	Size	For Screw No.
1940030	3mm	For 202-CS
1940050	1/16"	1930210
1940040	5/64"	1930070
1940010	3/32"	1930040, 1930010
1940100	5/32"	1930080
1940070	3/16"	1930100
1940080	2.5mm	1930770, 1930885

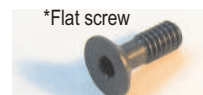


Screws



Tool no.	Type	Dia.	Threads/in.	Length	Key
*1930016	NC5	1/8"	40	9mm	1940040
1930020	NC2	11/128"	56	7/32"	
1930210	NC5	1/8"	40	1/8" Headless	1940050
1930211	NC5	1/8"	40	2.5mm Headless	1940050
1930070	NC3	0.099"	48	3/8"	1940040
1930010	NC5	1/8"	40	3/8"	1940010
1930040	NC5	1/8"	40	1/2"	1940010
1930080	NF10	3/16"	32	1/2"	1940100
1930085	10/32"	3/16"	32	1/4"	
1930130	NC10	5/32"			1940030
1930220	NF10	3/16"	32 Headless	3/16"	1940010
1930100	NF	1/4"		3/4"	1940070
1938070	M4	4mm		10mm	1940030

*Flat screw

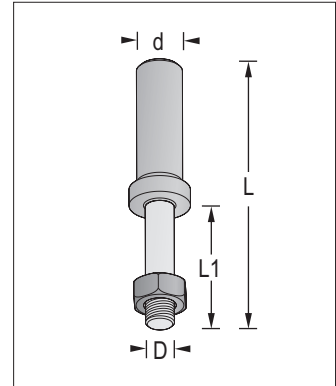




Arbors-Router Cutter Arbors w/Nut and Washer



Tool no.	D	d	L1	L
108R-4	5/16"	1/4"	7/8"	2 3/8"
108R-10	5/16"	3/8"	1 7/16"	3"
108R-12	5/16"	1/2"	1"	2 3/8"
1900044	5/16"	1/4"	1 5/16"	2 5/8"
1900048	5/16"	1/2"	1 3/8"	3"
1900088	5/16"	1/2"	2 1/8"	3 3/4"
1900058	5/16"	1/2"	1 1/2"	3 1/8"
1900118	5/16"	1/2"	2 5/8"	4 1/4"
1900138	5/16"	1/2"	1 3/4"	3 5/16"
108R-W	Washers only for above ARBORS			
108R-N	Nut only for above ARBORS			
108RMB	1/4"	1/2"	1/2"	2 3/8"
	28 Thread			



ROUTING
CARBIDE TIPPED

Nut - Nylon Insert Locknut



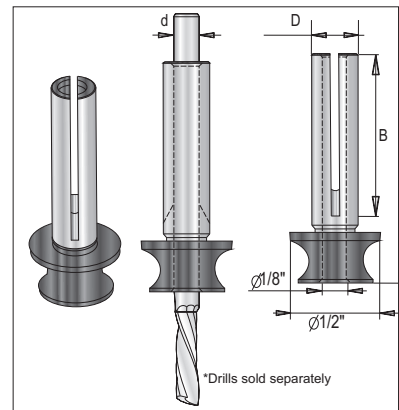
Tool no.	O.D	Bit
1980010	10-24	101RD



Adapter for 1/8" Shank Bits



A unique adapter specifically designed to accept 1/8" diameter bits. The easy-grip adapter will ensure that bits are fixed firmly and properly inserted into the collet. We recommend that you opt for a "unified" shank and cutting diameter as this will ensure optimum strength during the routing operation.



Tool no.	d	D	B	Length
New 1927124	1/8"	1/4"	7/8"	1 1/4"

Machine Collets Adaptors



Tool no.	O.D.	I.D.	Length
(Machine Collet) (Router bit shank)			
1990010	3/8"	1/4"	1"
1990012	1/2"	3/8"	1"
1990018	8mm	1/4"	1"
1990112	1/2"	1/4"	1"



Lock Ring



Tool no.	O.D.	I.D.	Screw	Key
1970110	11mm	1/4"	1930210	1940050
1970160	16mm	3/8"	1930210	1940050
1970200	21mm	1/2"	1930210	1940050
1970500	18mm	1/2"	1930210	1940050

Repair Kits



Tool no. 4B

Delrin Bearing SG-12 1/2"-3/16"

Screw 1930010

Washer 1920070

Spring Washer 1950010



Tool no. 2B

Ball Bearing BB-10A 3/8"-1/8"

Screw 1930070

Washer 1920010

Spring Washer 1950040



Tool no. 3B

Ball Bearing BB-10 3/8"-3/16"

Screw 1930010

Washer 1920040

Spring Washer 1950010



Tool no. 1B

Ball Bearing BB-12 1/2"-3/16"

Screw 1930010

Washer 1920070

Spring Washer 1950010



Tool no. 5B

Ball Bearing BB-12 1/2"-3/16"

Screw 1930016

Washer 1920070

Key 1940040



Tool no. 6B

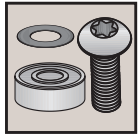
Ball Bearing BB-10 3/8"-3/16"

Screw 1930016

Washer 1920040

Key 1940040





Replacement Parts

We have assembled the Replacement Parts in Sets.
It is advisable to replace the Screws whenever the Ball Bearings are replaced.
It will prolong tool life by eliminating damaged threads.

Parts	Ball Bearing	Washer	Spring Washer	Screw	Nut	Lock Ring	Arbor 1/4" Shank	Arbor 1/2" Shank	Circlip
A	BB-6			1930020					
B	BB-10	1920040	1950010	1930010					
C	BB-10A	1920010	1950040	1930070					
D	BB-12	1920070	1950010	1930010					
E	BB-12 (X2)	1920070	1950800		1980010				
F	BB-12A			1930210		1970110			
G	BB-12A	1920040		1930080					
H	BB-16		1950800	1930080					
I	BB-16			1930210		1970110			
J	BB-16	1920310		1930080					
K	BB-16	1920040		1930080					
L	BB-16A	1920100	1950010	1930010					
M	BB-16B	1920040		1930080					1960050
N	BB-16M	1920100	1950010	1930010					
O	BB-16M	1920100	1950010	1930040					
P	BB-19			1930210		1970110			
Q	BB-19	1950800		1930080					
R	BB-19	1920040		1930080					
S	BB-19	1920100	1950800	1930080					
T	BB-19	1920040	1950010	1930010					
U	BB-19B			1930210		1970500			
V	BB-22						108R-4	108R-12	
W	BB-22			1930210		1970110			
X	BB-22								1960050
Y	BB-22M		1950800	1930080					
Z	BB-26M			1930211		1970160			
AA	BB-26			1930210		1970500			
BB	BB-28			1930210		1970200			
CC	BB-32			1930210		1970200			
DD	BB-35M								1960060
EE	BB-38			1930210		1970200			
FF	SG-12	1920040		1930010					
HH	SG-19		1950800	1930080					
II	SG-22A	1920040		1930080					
JJ	SG-22A		1950800	1930080					
KK	SG-22B	1920040		1930080					
LL	SG-22C	1920040		1930080					
MM	SG-22D	1920040		1930080					
NN	SG-22E	1920040		1930080					
OO	SG-25	1920040		1930085					
PP	SG 28.5			1930210		1970200			