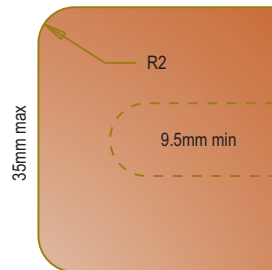
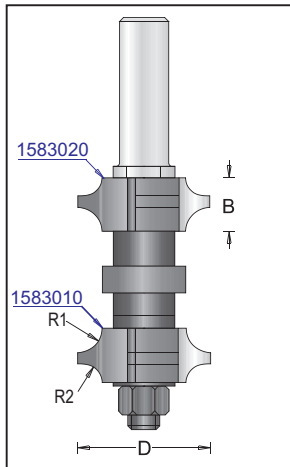
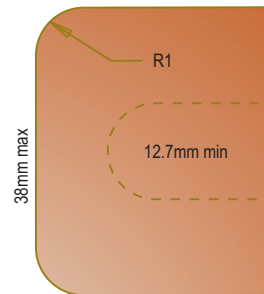


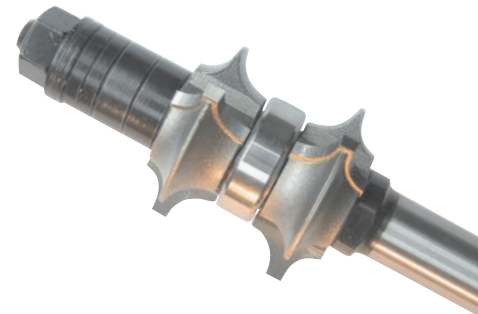
Adjustable Rounding Over Set, 3 Flutes



For 3/16" Radius use wood thickness
from 3/8" < through > 1 3/8".



For 1/4" Radius use wood thickness
from 1/2" < through > 1 1/2".



Tool no.	D	R1	R2	Shank	Length	Category
158RR	1 3/8"	1/4"	3/16"	1/2"	4 1/4"	R

Fully adjustable set for corner rounding top and bottom in just one pass

Replacement Parts: **Top Cutter:** 1583020; **Bottom Cutter:** 1583010; **Ball Bearing:** BB-22 ; **Arbor & Nut:** 1900118; **Spacer 1.0mm (3Pcs.):** 1920110; **Spacer 3.0mm (2Pcs):** 1920150 ;**Spacer 6.0mm (2Pcs.):** 1920160 ; **Spacer 0.5mm (1Pc):** 1920130 ; **Spacer 0.1mm (4Pcs.):** 1921000