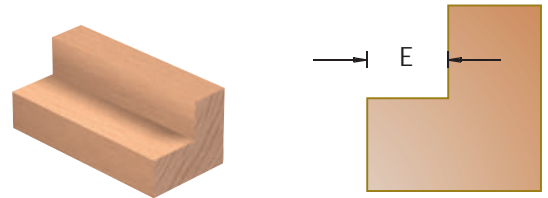


### Rabbeting Bits, 2 Flutes

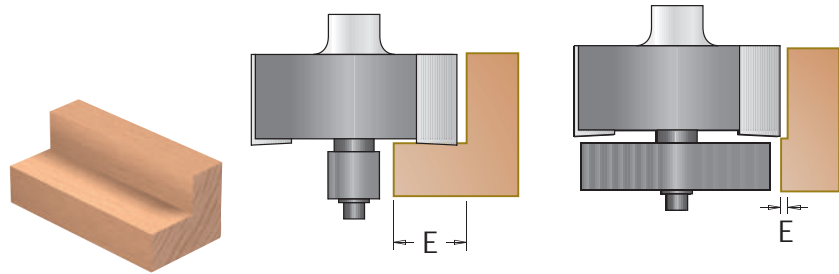
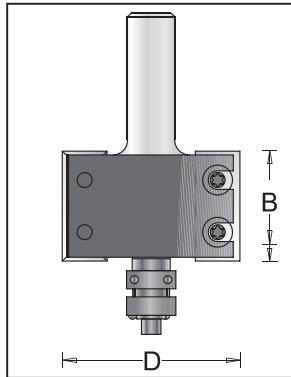
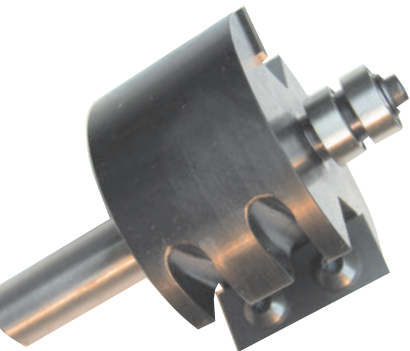


Tool no.	Knife #	D	Shank	B	E	Length	Cat.
4R4-28	3101513	1 1/8"	1/4"	33/64"	3/8"	1 7/8"	I
4R8-35	L12	1 1/2"	1/2"	15/32"	7/16"	2 1/2"	I

Replacement Parts:

(a) Knife: 3101513 ; Ball Bearing: BB-10; Flat head screw for knife: 1930355; Allen Key: 1940200 ; Flat Screw: 1930016

(b) Knife: L12; Ball Bearing:BB-12A ; Torx Screw: 1931482; Key T15:1941015; Washer:1950010; Spacer: 1920270; Screw: 1930040

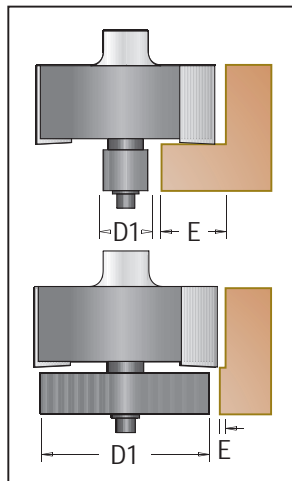


Tool no.	Knife #	D	Shank	B	E	Length	Cat.
4R8-50	L301	2"	1/2"	1 3/16"	3/4"	3 5/16"	I

Replacement Parts:

Knife: L301; Ball Bearing: BB-12A ; Torx Screw: 1931482; Key T15: 1941015;

Washer:1950010; Spacer: 1920270 ; Screw: 1930040



### Collars

Tool no.	D1	(E) for 4R8-35	(E) for 4R8-50	Cat.
1929790	2"	-	Flush	R
1929900	47.6mm	-	1/16"	R
1929890	44.4mm	-	1/8"	R
1929880	41.3mm	-	3/16"	R
1929950	38.9mm	-	15/64"	R
1929870	38.1mm	Flush	1/4"	R
1929860	34.9mm	1/16"	5/16"	R
1929940	32.5mm	7/64"	23/64"	R
1929850	31.7mm	1/8"	3/8"	R
1929840	28.6mm	3/16"	7/16"	R
1929930	27.0mm	7/32"	15/32"	R
1929830	25.4mm	1/4"	1/2"	R
1929820	22.2mm	5/16"	9/16"	R
1929920	20.6mm	11/32"	19/32"	R
1929810	19.0mm	3/8"	5/8"	R
1929800	15.9mm	7/16"	11/16"	R
1929910	14.3mm	15/32"	23/32"	R