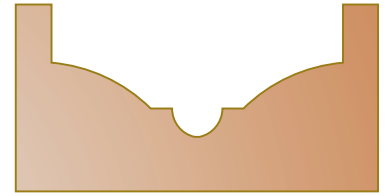
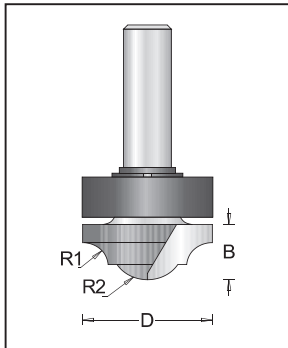
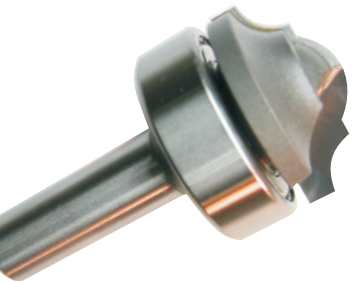


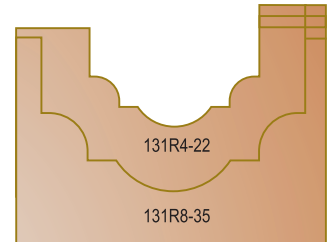
Round and Ogee Plunge Type, 2 Flutes



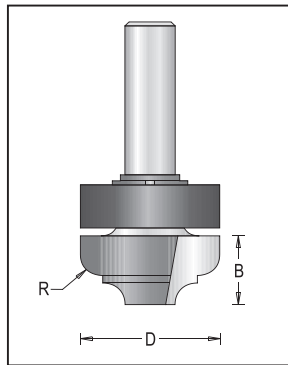
Tool no.	D	Shank	B	R1	R2	Length	Category
137R8-40	1 9/16"	1/2"	25/32"	5/32"	7/8"	2 9/32"	R



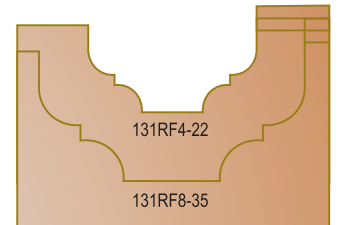
Panelling Groover with Upper Ball Bearing, Round Bottom, 2 Flutes



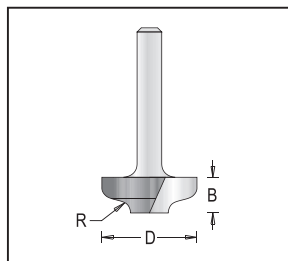
Tool no.	D	Shank	B	R1	R2	Length	Category
131R4-22	7/8"	1/4"	1/2"	7/32"	5/32"	2"	R
131R8-35	1 3/8"	1/2"	9/16"	13/32"	1/4"	2 5/8"	R



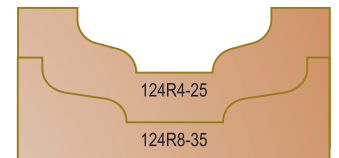
Panelling Groover with Upper Ball Bearing, Flat Bottom, 2 Flutes



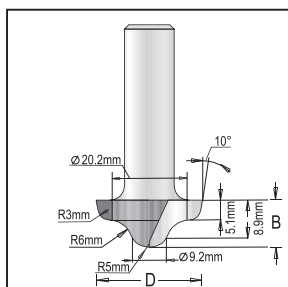
Tool no.	D	Shank	B	R	Length	Category
131RF4-22	7/8"	1/4"	3/8"	9/64"	2"	R
131RF8-35	1 3/8"	1/2"	9/16"	13/64"	2 5/8"	R



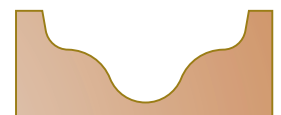
Flat Ogee Bits-Plunge Type, 2 Flutes



Tool no.	D	Shank	B	R	Length	Category
124R4-25	1"	1/4"	3/8"	1/8"	2"	R
124R8-35	1 3/8"	1/2"	3/8"	1/8"	2 1/4"	R



Ogee Bits-Plunge Type, 2 Flutes



Tool no.	D	Shank	B	Length	Category
137R4-27	1 1/16"	1/4"	7/16"	2"	R
137R8-27	1 1/16"	1/2"	7/16"	2 1/4"	R