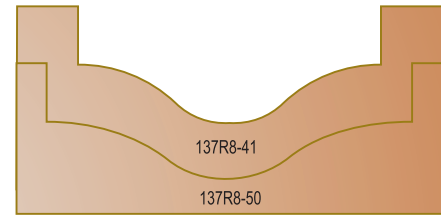
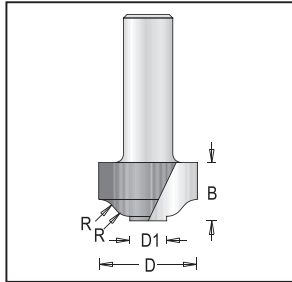
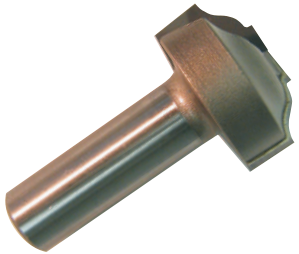


Round and Ogee
Plunge Type, 2 Flutes



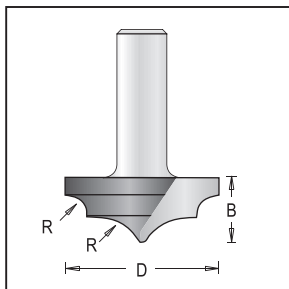
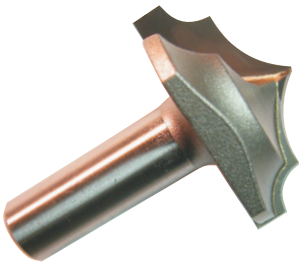
Tool no.	D	Shank	B	R1	R2	Length	Category
137R8-41	1 5/8"	1/2"	23/32"	3/8"	3/4"	2 13/64"	R
137R8-50	1 31/32"	1/2"	23/32"	5/8"	1 3/16"	2 13/64"	R



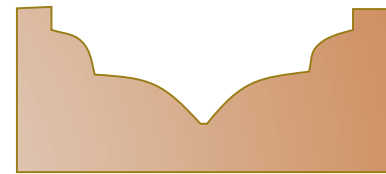
Step Flat Ogee
Plunge Type,
2 Flutes



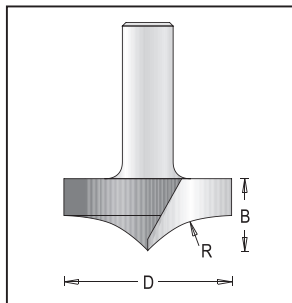
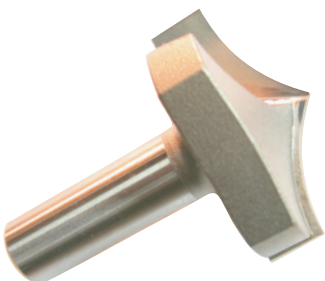
Tool no.	D	D1	Shank	B	R	Length	Category
124RB8-25	1"	3/8"	1/2"	19/32"	3/16"	2 3/32"	R
124RB8-30	1 3/16"	15/32"	1/2"	19/32"	15/64"	2 3/32"	R



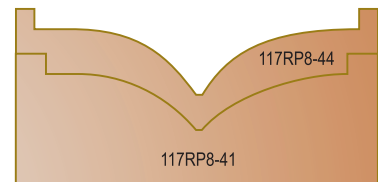
Rounding Over
Plunge Type, 2 Flutes



Tool no.	D	Shank	B	R	R1	Length	Category
117RPD8-41	1 5/8"	1/2"	23/32"	1/4"	19/32"	2 7/32"	R



Rounding Over
Plunge Type,
2 Flutes



Tool no.	D	Shank	B	R	Length	Category
117RP8-44	1 3/4"	1/2"	23/32"	23/32"	2 7/32"	R
117RP8-41	1 5/8"	1/2"	23/32"	1"	2 7/32"	R