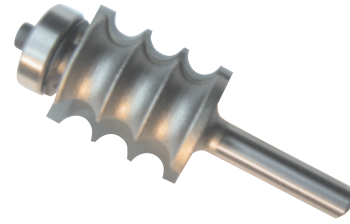
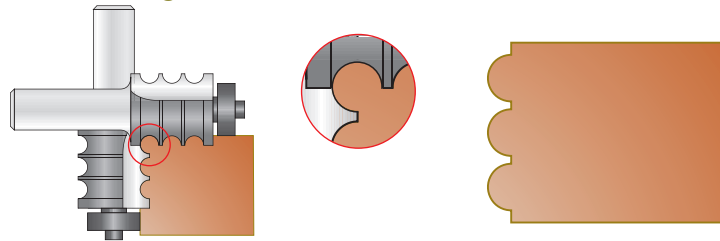
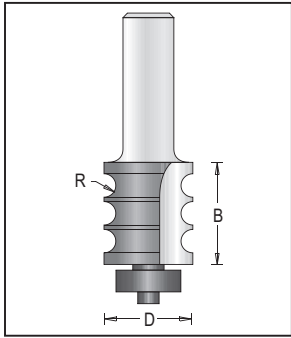
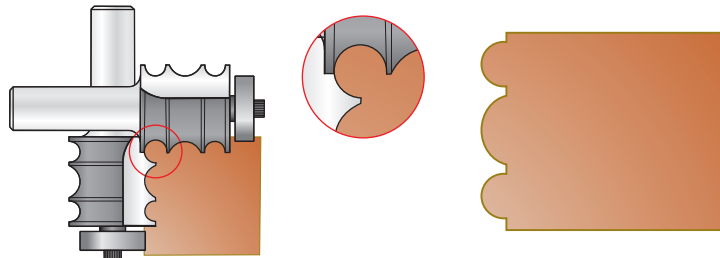
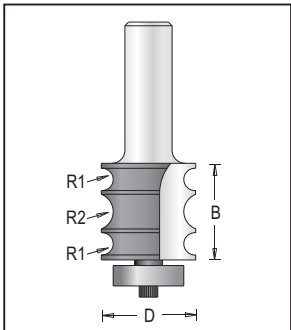


### Triple Beading Bits with Ball Bearing Guide, 2 Flutes

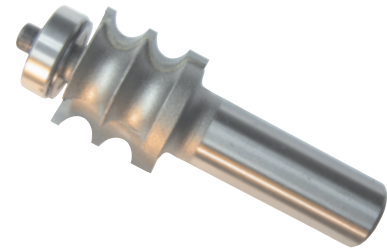
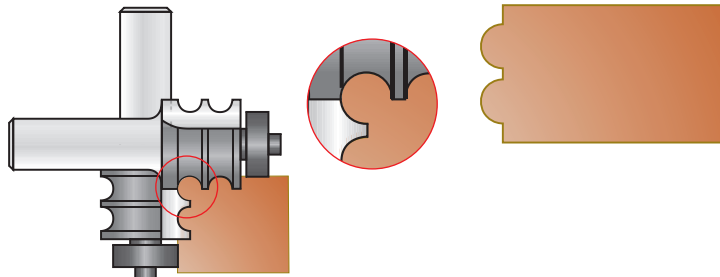
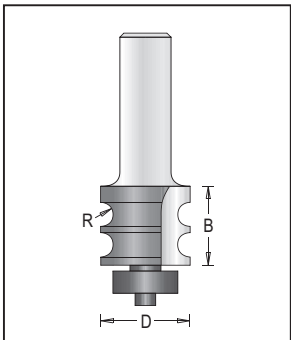


Tool no.	D	Shank	B	R	Length	Parts	Category
160R4-22	7/8"	1/4"	1"	1/8"	2 1/2"	N	R
160R8-22	7/8"	1/2"	1"	1/8"	2 7/8"	N	R



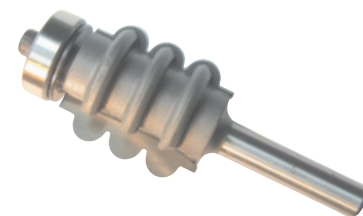
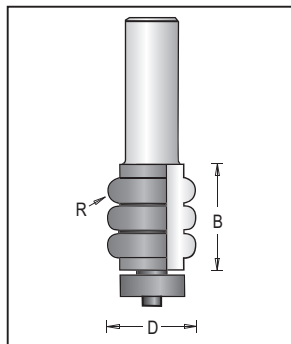
Tool no.	D	Shank	B	R1	R2	Length	Parts	Category
160R4-25	1"	1/4"	1"	1/8"	3/16"	2 1/4"	T	R
160R8-25	1"	1/2"	1"	1/8"	3/16"	2 1/4"	T	R

### Double Beading Bit with Ball Bearing Guide, 2 Flutes



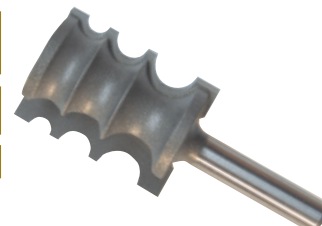
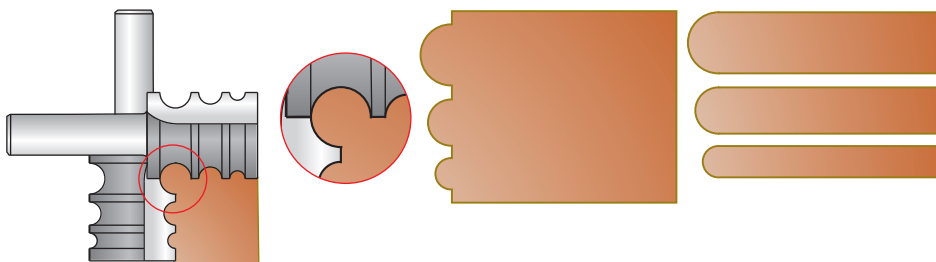
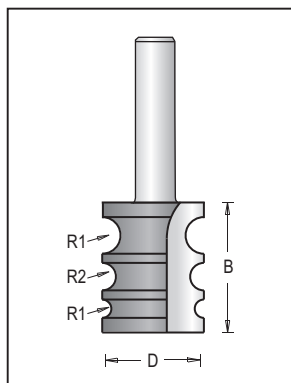
Tool no.	D	Shank	B	R	Length	Parts	Category
160R8-21	7/8"	1/2"	3/4"	1/8"	2 5/8"	N	R

### Convex Beading Bits, 2 Flutes



Tool no.	D	Shank	B	R	Length	Parts	Category
164R4-22	7/8"	1/4"	1"	1/8"	2 1/2"	N	R
164R8-22	7/8"	1/2"	1"	1/8"	2 7/8"	N	R

### Variable-Beading Bits, 2 Flutes



Tool no.	D	Shank	B	R1	R2	R3	Length	Category
161R4-22	7/8"	1/4"	1 1/8"	5/32"	1/8"	5/64"	2 1/4"	R